

PREFACE

The purpose of this plan is to provide an information base to guide the City of Victoria in decisions related to parks, recreation, and open space within the city, to assist in the implementation of those decisions, and to set guidelines for future park and open space developments that are feasible for Victoria in accordance with the desires of its citizens.

This plan is needed due to the successful implementation of the park project recommendations from the 2000 Park, Recreation and Open Space Master Plan. The following pages contain goals and objectives for the city's park and open space system, the methodology used to develop the plan and an inventory of existing facilities which make up the local park network. Also included is an analysis of local needs, parks, recreation, and open space priorities, and an implementation program developed to guide the City in accomplishing the proposed projects within the plan's time frame.

We would like to thank the following persons and groups who were instrumental to the development of this plan:

Parks and Recreation Commission

Vic Caldwell, Chairperson
Michael Hummel, Vice-Chairperson
Barbara Allen-Lampley, Executive Committee Member
Jamie Brown
Lewis Neitsch
Viola Saenz
Ashley Walyuchow
James Wearden
Matt Wickham

Mayor

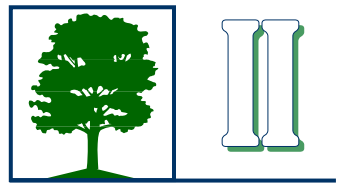
Honorable Will Armstrong

City Council

Paul Polasek, Mayor Pro-Tem
Denise Rangel
Gabriel Soliz
David Hagan
Joe Truman
Tom Halepaska

City Staff

Charmelle Garrett - City Manager
Doug Cochran - Director, Parks and Recreation Department
Shane Simon, Recreation Services Manager
Kevin Stewart, Parks Services Manager



INTRODUCTION

Importance of the Master Plan

The first Parks, Recreation and Open Space Master Plan was introduced to the community and approved by City Council in 2000. The plan provided an assessment of current conditions and a development roadmap for the next ten years. In 2010 the process began to develop a new master plan that addresses needs through 2025. This plan, Parks 2025, provides information and will guide staff in the development of the park system. The Parks 2025 plan addresses:

- Facility needs
- Deficiencies in the current system
- Address needs in potentially high growth corridors of the City
- Future needs of park acquisition
- Recommendations to address needs and deficiencies
- Action Plan for implementation

Quality of Life in Victoria

For many years it has been said “Victoria is on the cusp of something great”. The time has arrived with the addition of an international company joining our community. Some have mentioned that Victoria is about to explode with an influx of new people joining our community.

Quality of life has different meanings to everyone. Walking on a trail, visiting the library or participating in active sports are all examples. When companies make an investment by locating their business in Victoria they look at the parks, libraries, education system and other variables. Parks are an asset to a community, when properly maintained.

Victoria has 16 parks and 846 acres of parkland for our citizens and visitors to enjoy. The flagship park, Riverside, has many amenities for all to enjoy. A two mile trail along the beautiful Lone Tree Creek corridor completed in 2008 was designed for runners/walkers and bike enthusiasts. In 2007, Victorian’s approved the first bond issue for parks in 30 years. The result was the Youth Sports Complex which has 12 youth ballfields for baseball and softball.

This plan addresses the quality of life needs of our community and is very ambitious. We have an opportunity to develop a park system that our citizens want and will be proud of for years to come.

Master Plan Purpose and Guide

The purpose of the master plan is to guide staff in the development of a park system the citizens want. Other governmental agencies, not-for-profit organizations and profit organizations can benefit from this document. The intention of this document is to guide development of recreational facilities and activities in Victoria. This may occur under the government sector or private sector. In both cases the citizens of Victoria will benefit from increased active and passive recreational opportunities.

Master Plan Goals and Objectives

The goals and objectives for the Parks 2025 Master Plan were developed through a combined effort of the Parks and Recreation Commission and park staff. Many of the goals were derived from comments and concerns from the general public through the citizen survey.

Goals, Objectives and Action Steps

- 1. Goal: Establish a comprehensive system of parks to serve the recreational needs of all residents, and visitors to Victoria that provide desired recreational facilities near the people that will use them.**

Objective:

1. Acquire land for future park development in underserved areas as land becomes available.
 - a. Provide 1.25 acres of Neighborhood Parks (5- 10 acres) per 1,000 population.
 - b. Provide five acres of Community Parks (10-150 acres) per 1,000 population.
2. Acquire, preserve and enhance increased access to lakes and streams for recreational activities, vistas and environmental restoration.
3. Plan for expanded program offerings to insure that adequate parks and facilities are available to meet the needs of our community.
4. Explore the feasibility of providing parks, park facilities and trails within walking distance of both homes and workplaces.

Action Steps

- a) Acquire and develop additional parkland in the northwest and northeast corridor of the City to meet the additional parkland needs in higher growth areas of the city.
 - o Develop two (2) Neighborhood Parks - North section.
 - o Develop one (1) Community Park – NW section.
 - o Develop one (1) Neighborhood Park - NE section.
 - o Develop one (1) Neighborhood Park – Central section (Infill)

- 2. Goal: Preserve and enhance scenic, natural, and historical areas within parks.**

Objective:

1. Create vistas (scenic views along river) along trail corridors.
2. Develop and promote historical and archaeological areas within parks.
3. Coordinate with local, state and national agencies to enhance the water resources along the Guadalupe River.
4. Acquire land to expand and preserve the historical, archaeological and cultural aspects of Riverside Park.
5. Identify, protect and conserve wildlife habitats sites and link to parks, neighborhoods and schools.
6. Preserve and protect environmental features such as, wetlands, open space, woodlands, water features.
7. Provide on-site educational displays describing the historical significance of the site and/or structure.

Action Steps

- a) Convert Memorial Square Park into a historical cemetery.
 - b) Develop historic interpretative displays at Riverside Park depicting history of the Indians, Spanish settlers and other historical aspects.
3. Goal: **Provide safe, clean restrooms at parks and recreation facilities.**

Objective:

1. Modernize the restrooms using cost effective construction materials.
2. Develop inviting color schemes.
3. Develop signage with contact information for public when issues arise.
4. Ensure restroom cleanliness.

Action Steps

- a) Renovate the storage facility at Stayton Street and convert into a restroom.
 - b) Upgrade/renovate restrooms.
 - o Hopkins Park.
 - o Community Center Park.
 - o Grover's Bend.
4. Goal: **Develop a citywide network of trails, which includes park trails, hike and bike trails, and bike routes.**

Objective:

1. Identify potential corridors and sites for trails prior to new development.
2. Identify trails sites along streams and outfalls.
3. Identify potential trail sites where ROW has already been acquired.
4. Identify future thoroughfare construction projects and incorporate bike lanes.
5. Provide, at minimum, two east/west bike routes and two north/south routes.
6. Link parks to neighborhoods and schools using hike/bike trails.
7. Extend appropriate types of trails through natural areas or greenways.
8. Actively promote the use of the developed trails system in ways that encourages physical activity.
9. Provide diverse trail opportunities that include all weather and natural surfaces, looped systems and trails with a variety of lengths and access points.
10. Provide adequate trail support facilities, such as restrooms, seating, lighting, water and parking.

Action Steps

- a) Develop 3-5 miles of trails.
 - Develop trail along North Outfall to connect Hwy 87 corridor with N Navarro.
 - Develop Hike/Bike trail along Hwy 87 in TXDOT ROW.
 - Connect with North Outfall trail.
 - Connect with West Outfall Trail.
 - Develop trail along Jim Branch Outfall.
- b) Develop trail along the West Outfall.
 - Connect with Riverside Park Trail system.
- c) Develop Fox's Bend into a trail for bikes, runners, walkers, etc.

- d) Develop Grover's Bend into a trail for bikes, runners, walkers, nature enthusiast. etc.
- e) Develop a trail system in Riverside Park using multi-surface type materials to meet the needs of:
 - Mountain Bikers
 - Nature enthusiast
 - Runners/joggers
 - Walkers
- f) Develop two East/West bike lanes on major corridors that are integrated into the Hike/Bike trail system.
- g) Develop two North/South bike lanes on major corridors that are integrated into the Hike/Bike trail system.
- h) Develop Nature Trail – Lone Tree Creek Park.
- i) Install exercise stations along selected trails.

5. Goal: Protect, manage and enhance natural resources.

Objective:

1. Acquire and/or preserve areas such as wetlands, lakes and streams to serve as natural links between parks, schools and neighborhoods.
2. Acquire land to preserve the riparian (term for rivers, streams, etc.) corridor as natural area and to protect water quality.
3. Coordinate with river authority to enhance the Guadalupe River as a viable recreation site.

Action Steps

- a) Acquire additional land adjacent to Riverside Park to ensure water shed protection.
- b) Clear/remove debris along Guadalupe River corridor.
- c) Clear/remove debris along West Outfall and Paddling Access Point in Riverside Park.

6. Goal: Provide special interest facilities at new or existing parks (i.e., community gardens, skateboard parks, dog parks, etc.).

Objective:

1. Identify and develop special facilities that encourage public/private partnerships.

Action Steps

- a) Develop a Dog Park.
- b) Develop an equestrian facility for rental of horses.
- c) Add Zip Line Course across Guadalupe River.
- d) Develop challenge ropes course.
- e) Explore and develop a waterpark with lazy river and water play areas.
- f) Add a train system in Riverside Park coordinated with private partnership.

7. Goal: Provide Park and leisure facilities for a wide range of passive and active recreation opportunities.

Objective:

1. Develop additional athletic facilities and/or expand capacity of existing facilities that will allow for active recreational pursuits.
2. Develop athletic facilities that meet high standards and requirements for all age groups, skill levels, and interests.
3. Park design and renovation should include a balance of passive and active recreational needs.

Action Steps

- a) Develop water playground in the north section of the city.
- b) Explore the conversion of the municipal swimming pool into a large water playground.
- c) Develop a soccer field complex to complement the Baseball/Softball complex.
- c) Expand Disc Golf Course to 27 holes.
- d) Add power along McCright Street corridor for events and programs.
- e) Explore the conversion of the Community Center to a Recreation facility complex for indoor/outdoor recreation.
- f) Add large pavilion at a future Community Park.

8. Goal: Enhance park safety.

Objective:

1. Monitor and evaluate police crime data, Parks and Recreation incident reports, Parks and Recreation work orders, and visitor and staff complaints to determine which parks and facilities have identifiable safety or security issues.
2. Coordinate preliminary design of new parks and facilities with the Police and Fire Departments.
3. Adopt safe lighting level standards for parks and recreation facilities.
4. Use security cameras at high vandalism sites.
5. Increase enforcement of park regulations.
6. Develop citizen surveillance Park Partner Volunteer Program.
7. Develop park police program.

Action Steps

- a) Add security lighting in Riverside Park.
- b) Add security cameras in parks.
 - Include in the design and cost estimate for future parks.
 - Add in existing parks.
 - Explore installation of emergency call boxes.

9. Goal: **Provide better ways to disseminate information about Victoria's parks, programs and activities to all segments of the community.**

Objective:

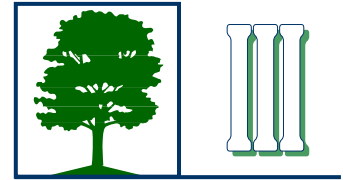
1. Enhance customer service by making information more accessible to the community.
2. Develop a web site that is informative and user friendly.
3. Develop partnerships with media groups.
4. Coordinate sponsorships of events to include media promotion.
5. Utilize non-traditional methods of advertisement.
6. Determine marketing success by surveying users.
7. Utilize local university marketing program to develop a program that promotes communication to underserved segments of the community.

Action Steps

- a) Develop three (3) information stations in Riverside Park.
- b) Develop inviting and informative signage in Riverside Park
- c) Utilize social media (utilize FB, Twitter, Future Technology)

According to Texas Parks and Wildlife Department, the master plan should cover at least ten year period and be reviewed/updated every five years. Since the original plan was adopted in 2000 the City has taken the position to review/update the master plan every two years. In this proposed plan, as in the original plan, a citizen survey was conducted to determine the community's needs for recreation. The timeframe between the survey for the first master plan and the 2025 plan was 10 years. The City should conduct a user survey at least every five years and make changes to the master plan accordingly. The Parks and Recreation Department should review the plan according to the following guidelines:

- Park staff should review the master plan every two years for completed projects.
- Every five years conduct a user survey and make changes to the master plan.
- The Parks and Recreation Commission should review the plan and make necessary adjustments.



SECTION THREE

3.1 Community Profile

Geographic Location

Nestled beside the meandering Guadalupe River, the City of Victoria is located at the convergence of U.S. Highways 59, 77 and 87 in Victoria County. It is the largest city in the central coastal region known as the Golden Crescent, a group of seven Texas counties including Calhoun, Dewitt, Goliad, Gonzales, Jackson, and Lavaca. Major Texas metropolitan areas of Houston (124 miles), San Antonio (114 miles), Austin (122 miles), and Corpus Christi (85 miles) are within a two-hour drive. In addition, it is just 30 miles inland from the Gulf of Mexico. Accessible by three U.S. highways, rail, commercial air, and a barge canal connected to the Gulf Intracoastal Waterway. It offers tremendous growth potential for manufacturing and distribution facilities, as well as recreational and cultural opportunities.

Victoria lies about 105 feet above sea level. Located on the South-central Texas Coastal Plain, the area enjoys moderate temperatures and mild weather conditions throughout the year. At a latitude of 28 degrees above the equator, the area climate is comparable to Orlando, Florida. Annual precipitation averages 36 inches per year with a mean annual temperature of 71 degrees. The surrounding countryside is flat with a majority of the land being utilized for grazing and cultivation.

History, Past and Present

Victoria is one of the state's oldest, most historic cities. In fact it could be argued that Texas history began in Victoria County. Its unique history began when French nobleman Rene Cavalier, Sieur de LaSalle established the short-lived Fort St. Louis, which was abandoned in 1690. The first permanent European settlement was established in the area in 1725. The Spanish erected a small mission to Christianize and teach the indigenous people. This site remained in use by the Indians through the early 1800's. The town was established in 1824



Main Street - 1870

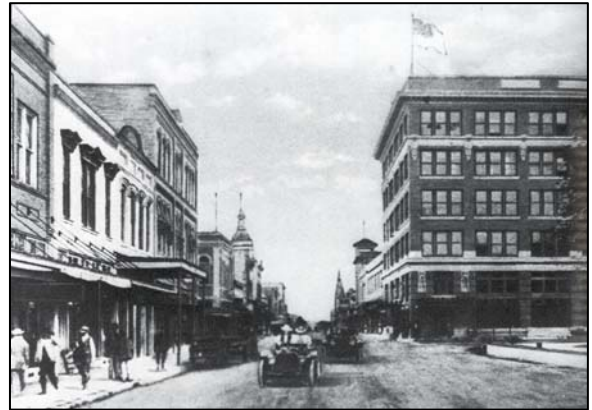
when the Republic of Mexico approved Don Martín DeLeón's request for a large land grant on the lower Guadalupe River. The land grant detailed a capital city, "Nuestra Señora de Guadalupe de Jesus Victoria", shortened by colonists to "Guadalupe Victoria". DeLeón's city plan included a one square mile grid designed with 256 blocks and sited in a north-northeast orientation along the eastern bank of the Guadalupe River. The original townsite was laid out in accordance with his knowledge of European

and Mexican cities, setting aside land for a central plaza, schools, churches, and trade. It was the only successful land grant in Texas bearing a Spanish surname, and Victoria County was the only place in Texas where all six flags actually flew.

Victoria's initial population was comprised of 41 families granted permission to settle the colony. Each family received one league of land and a town lot. By 1834 about 300 people were living in the municipality, which was governed by the Council of Ten Friends from 1824 to 1828 and by four alcaldes from 1828 to 1836. Guadalupe Victoria contributed volunteers, supplies, and arms to the Texas cause against Santa Anna. Its superior defensive position on

the banks of the Guadalupe induced Sam Houston to order James Fannin to retreat there from Goliad in 1836. However, Fannin was defeated at the Battle of Coleto, and the town was occupied by the Mexican army until the Texas victory at San Jacinto. Soon thereafter, the Mexican residents were ostracized; they fled, and their town, resettled by Anglos, became known as Victoria. Victoria was incorporated under the Republic of Texas in 1837.

In reviewing the regions' history, Victoria has been especially susceptible to periods of stagnation, the boom and bust business cycles. Booms resulted from its crossroads location, agriculture, cattle, oil, banking, medical facilities, the military presence, the barge canal, and the petrochemical industry. Busts resulted from drought, the decline in cattle and oil prices, the closing of Foster Field and industrial plant layoffs.



Main Street - 1924

The last forty years has witnessed a trend from Victoria's old, internal leadership cadre of a small number of families to external forces of leadership. What was once "paternalistic" leadership that did a good job of taking care of Victoria has given way to the outside influence of multinational corporations and global economic forces. Victoria has survived past cycles because it is conservative to the point of resisting change. However, while it takes longer for Victoria to feel the downtrends in the national economy, it also takes longer for it to recover.

Population

Historical U.S. Census population figures and growth rates for the City of Victoria and Victoria County for years 1900 through 2000 are displayed in Table 1. High growth rates for the city are obvious in the different economic boom eras (See Table 1).

1910 – 1920 Cattle and agribusiness

1930 – 1940 Oil

1950 – 1960 Military, petrochemicals, banking

However, recent growth rates are lower than the state as a whole. Comparing historical population with other similarly sized cities in Texas reveals that Victoria has similar growth rates and has been in the "middle of the pack" until the last decade, when its growth rate became lower than others.



Table 1
Historical Population, City of Victoria and Victoria County

Year	City of Victoria			Victoria County	
	Population	Percent Change	Percent of County	Population	Percent Change
1900	4,010		29.32%	9,668	
1910	3,673	-8.40%	24.50%	11,317	17.06%
1920	5,957	62.18%	32.60%	12,314	8.81%
1930	7,421	24.58%	31.62%	16,050	30.34%
1940	11,566	55.86%	48.72%	12,175	-24.14%
1950	16,126	39.43%	51.62%	15,115	24.15%
1960	33,047	104.93%	71.12%	13,420	-11.21%
1970	41,349	25.12%	76.91%	12,417	-7.47%
1980	50,695	22.60%	73.68%	18,112	45.86%
1990	55,076	8.64%	74.07%	19,285	6.48%
2000	60,603	10.04%	72.07%	23,485	21.78%
2010	62,592	3.28%	72.12%	24,201	3.05%

Source: U.S. Census: 1900 – 2010 as reported in the Victoria 2020 Comprehensive Plan

* Major growth periods, which coincide with economic boom eras, are highlighted in bold.

Population Projections

The city's population is projected to grow to over 74,000 by the year 2025, at which time the county's population will near 103,000. It should be remembered that population projections are predictions of future change based upon past patterns. These patterns may or may not continue and future conditions cannot be guaranteed. The objective in making these projections is to have forecasts that are as realistic as possible for planning purposes. As with any projections, they should be reviewed periodically and updated to reflect new information and changing conditions.

Table 2
Population Projections for Victoria County and the City of Victoria

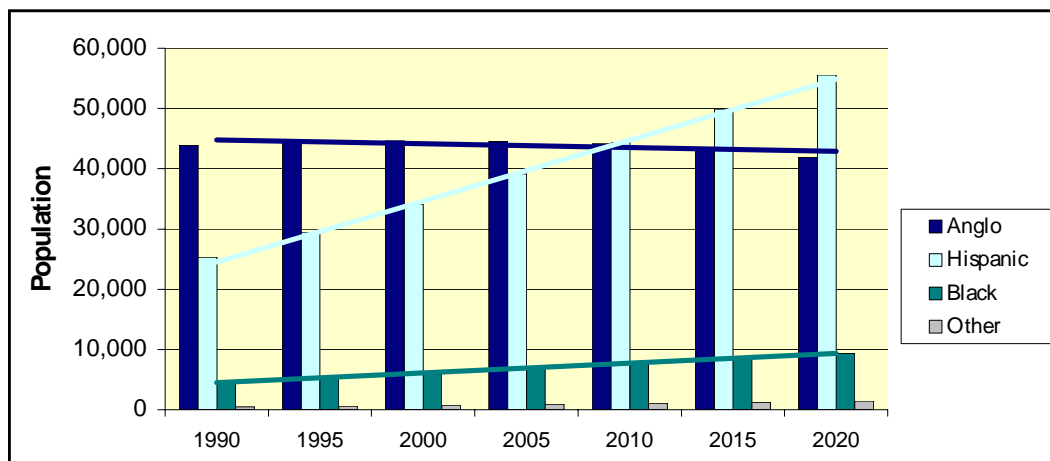
Year	Victoria County	City of Victoria
2010	86,793	62,592
2015	94,310	67,904
2020	98,847	70,170
2025	102,890	74,080

Sources: U.S. Census, 2010

Ethnic Composition and Income

Table 3 illustrates the race/ethnic composition of Victoria County's population in the 1990 Census and projected up to the year 2020. Historically the majority of the county's population has been Anglo (white), but the trend lines in Table 3 show that by the year 2010 there should be a higher percentage of Hispanic origin persons than Anglo persons in the county – 45.6% compared to 45.3%. Over the next twenty years the percentage of African American persons in the county population should increase slightly, from 7.0% in 2000 to 8.7% in 2020. During this same time period the percentage of Anglo persons in the county population should decrease from 52.2% in 2000 to 45.3% in 2020.

Table 3
Population Projections by Race/Ethnicity, Victoria County



Source: Texas State Data Center as reported in the Victoria 2020 Comprehensive Plan

Census 2000 reports the ethnic breakdown for the City of Victoria is 71% Caucasian, 7% African American, 1% Native American, 1% Asian, 17% Other and 3% as two or more of the aforementioned races. Additionally, 43% of the population indicated they are of Hispanic origin. The U.S. Department of Housing and Urban Development (HUD) data indicates a median family income of \$34,900 with approximately 46% of households considered low income. At the time of printing, Census 2000 income figures had not been released. Therefore, the income analysis was performed utilizing 1990 income data from both HUD and the U.S. Census Bureau.

3.2 Education

Victoria Independent School District serves students in the City of Victoria and much of the county. The Diocese of Victoria operates two elementary schools and one high school. In addition, there are several other private and parochial schools serving the area. Recently, the Victoria Independent School District invested in the addition of two new high schools and improvements to many of the elementary and middle school campuses. The process of allowing the University of Houston-Victoria to become a four year university was completed in 2010.

3.3 Environmental Assessment

Victoria County is in the southeastern part of Texas. It has an area of about 894 square miles, or 572,160 acres, of which 2,330 acres is water. Most of the county is a nearly level, gently sloping plain that is dissected by a few well-defined streams and rivers. The northwestern part of the county is mainly gently sloping and is dissected by many well-defined drainage ways. The Guadalupe River dissects the central part of the county. It flows to the southeast. Coletto Creek forms most of the western boundary, and the San Antonio River forms part of the southern boundary of the county. Arenosa and Garcitas Creeks form the eastern boundary. Elevation ranges from sea level in the southern part of the county to 200 feet above in the northern and northwestern parts.

The major land uses in Victoria County are cattle ranching and farming. In 1967, about 68 percent of the county was rangeland, 21 percent was cropland, 4 percent was pastureland and hayland, and 4 percent was urban and built-up areas and water areas. The rest was idle land.

Victoria County is in the Gulf Coast Prairies and Texas Claypan Major Land Resource Areas. The soils in the Gulf Coast Prairies Area formed under prairie vegetation and are dominantly dark, loamy, and clayey. The soils in the Texas Claypan Area formed under post oak savanna vegetation and are dominantly light colored, loamy, and sandy.

3.4 Description of Environment

Vegetation

The major vegetation area of which the Victoria area is a part, is the Gulf Coastal Prairie and Texas Claypan Major Land Resource Areas. The primary existing tree species are Post Oak and Mesquite, however, a significant number of Pecan, Cottonwood and Willow, among others are present. Interspersed large openings can be found throughout the City. These openings support a variety of native grasses and forbs.

Soils and Geology

Nada-Telferner soils typically have a surface layer of dark grayish brown sandy loam about 8 to 10 inches thick. The subsurface layer is light brownish gray, fine sandy loam about six inches thick. The subsoil from 16 to 54 inches is mottled, brownish gray sandy clay. From 24 to 40 inches it is mottled, light brownish gray clay loam, and from 40 to 50 inches it is mottled, light gray clay loam. These soils are slightly acid to neutral on the upper grade and moderately alkaline in the lower grade.

The soils support the native plant species listed in the vegetation section. They are moderately suited for crop and grazing land, and wildlife habitat potentials. According to the Soil Conservation Survey for Victoria County, all the soils found in the planning areas require limited use, some soil reclamation, special design, intensive maintenance, or by a combination of these measures. The soil survey rates the soils for uses such as composites, paths and trails, picnic areas, and playground. None of the soils have characteristics which would preclude any such activities.

Topography/Hydrology

Slope is the main management concern on all the soils of the survey area. The nearly level soils are often seasonally wet and need adequate drainage outlets. The rest are susceptible to sheet and gully erosion if they are not protected.

Climate

The climate of Victoria County is humid subtropical. Winters are mild. Polar Canadian air masses that move southward across Texas and out over the Gulf in winter produce cool, cloudy, rainy weather. Precipitation is most often in the form of slow, gentle rains. Spring weather is variable though moderate overall. March is relatively dry, but thundershower activity increases in April and May. Summer weather varies little. Summer months have abundant sunshine and are relatively dry. Occasional slow moving thunderstorms or other weather disturbances may dump excessive amounts of precipitation on the area. The fall season is moderate, but there are frequent periods of mild, dry, sunny weather. Heavy rains

may occur early in the fall in association with tropical disturbances which move westward from the Gulf. Tropical storms are a threat to the area in summer and fall, but severe storms are rare. In winter the average temperature is 55 degrees, and the average daily minimum temperature is 44 degrees. In summer, the average temperature is 83 degrees, and the average daily maximum temperature is 92 degrees.

The total annual precipitation is 38 inches. Of this, 25 inches, or 65 percent, usually falls in April through September, which includes the growing season for most vegetation. In two out of ten years, the rain fall in April through September is less than 20 inches. Thunderstorms occur on about 50 days each year, and most occur in the summer. The average relative humidity in mid-afternoon is about 60 percent. Humidity is higher at night, and the average at dawn is about 90 percent. The sun shines 70 percent of the time possible in summer and 50 percent in winter. The prevailing wind is from the south-southeast. Average windspeed is highest, 12 miles per hour, in spring. The first/last frost is November 16 - December 1 / February 16 – end of February. The growing season average is 245 to 260 days annually.

Natural Resources

Victoria County has natural resources of oil, natural gas, sand and gravel, and fresh water. Commercial production of oil and natural gas began in the early 1930's. Sand and gravel is mined in areas along the Guadalupe River and is transported to other coastal areas via the Victoria Barge Canal and Intercoastal Canal System. A large underground reservoir and several major rivers and streams in the county provide an abundant supply of water for home and industrial uses.

3.5 Service Area

For the purpose of this Parks, Recreation and Open Space Master Plan Update, the service area includes all land within the incorporated limits of the City of Victoria and provides parks and open space project recommendations through 2025.

3.6 Role of the City of Victoria Parks and Recreation Department

The City of Victoria Parks and Recreation Department's role in the provision of active and passive recreational opportunities is that of facilitator as well as a recreation programmer. Victoria is committed to the acquisition and development of various types of parks in order to provide a well-rounded, quality park system that serves the local and regional recreational needs. The City will continue to provide professional staff for the administration, operation and maintenance of the park system as well as programming for various recreational opportunities. Continued cooperation and coordination with other groups, such as non-profit program providers, Victoria Independent School District and others, will minimize the costly duplication of facilities while also strengthening civic pride.

METHODOLOGY

The process used in the development of this plan included an extensive review of the existing Park, Recreation and Open Space Master Plan with heavy emphasis placed on public input. It should be noted that the professional staff of the City of Victoria was constantly involved through the planning process to insure the plan resulted in a feasible and balanced park program for the city that once implemented, will fully serve the active and passive recreational needs of the community.

A citizen survey was distributed to area residents in order to get a good cross section of the community. The City of Victoria conducted four public meetings in order to address the needs and concerns of the park system.

Staff reviewed information from citizen surveys, Parks and Recreation Commission, and the 2000 Parks and Open Space Master Plan to develop project priorities to meet the changing needs of the community. An implementation schedule was developed which outlines a feasible plan to assist the City in accomplishing the recommendations within the Plan's time frame.

AREA FACILITY CONCEPTS AND STANDARDS

The city's park classification system may be broken down into nine major categories. These park categories are as follows:

Pocket/Ornamental Park

A pocket or ornamental park is a small (usually less than 1 acre) park developed with passive elements such as sidewalks, fountains, gazebos, plazas, benches, and landscaping.

Neighborhood Parks

A neighborhood park is a site of approximately 5 to 10 acres and serves the area within a 1/2 mile radius with both active and passive recreational opportunities. Facilities typically found in neighborhood parks include play apparatus, picnic areas, shelters, play courts, unlighted play fields, restrooms, walking/jogging trails, natural open space, parking, swimming pools, and tennis courts.

Community Parks

A community park is a site of approximately 30 to 100 acres with a service area radius of two miles. Facilities usually included in such a park are tennis courts, shelters, separate or multi-purpose sports fields, play apparatus, picnic areas, walking/jogging trails, recreation centers, swimming pools, open space, and restrooms.

Regional Parks

A regional park is normally a site of 200 to 1,000 acres, which serves the residents within a ten-mile radius of the park and includes a wide range of recreational opportunities. Although the list of facilities that are suitable for inclusion in regional parks is endless, some of the most common facilities are sports fields, tennis courts, basketball courts, swimming pools, camp grounds, bicycle and hiking trails, nature areas, a golf course, recreation center, restrooms and ample parking. As indicated by the broad range of facilities, both active and passive recreational opportunities should be provided by such a park.



Riverside Park

Special Use Park

This classification covers a broad range of parks and recreation facilities that focus on one or two specific recreational uses. Facility space requirements are the primary determinants of site size and location. For example, a golf course may require 150 acres, whereas a community center with parking may only require 10 or 15 acres. Potential special uses may include baseball/softball complexes, soccer complexes, tennis centers, sports stadiums, performing arts facilities, amphitheaters, community centers and golf courses.

Greenbelts

Greenbelts or greenbelt parkways are linear parks usually developed around a natural resource such as a creek, river, utility easement, or lake shore. The potential benefits of a greenbelt system are numerous. Not only can a greenbelt system preserve valuable open space and natural habitat, it can provide a natural environment for walking, jogging, and bicycling trails, provide a transportation corridor linking neighborhoods to parks, schools, and shopping areas and provide a variety of passive recreational opportunities free, or relatively free, from automobile interference. Greenbelts also serve as natural buffers between land uses, serve as utility (underground) easements, and can usually be acquired at a relatively inexpensive price due to the restrictions on development. Design standards for greenbelts are relatively loose in order to allow the maximum use of the natural environment in the design. Greenbelt corridor widths are often determined by the existing topography, severity of flooding, and other unique natural features. Greenbelt corridors of less than fifty (50) “useable” feet should be avoided and narrow corridor sections kept to a minimum. One hundred foot corridor widths give flexibility in design and are encouraged wherever possible.

Natural Areas

Natural areas are spaces containing ecosystems in a non-disturbed state with minimal man-made intrusions. Natural areas lend a certain aesthetic and functional diversity to a park network and urban landscape. Although the benefits of natural areas are hard to quantify, they are numerous and include preservation of wildlife habitat and opportunities for nature study. When flood plains are preserved as natural areas they offer a resource to aid in the protection from flooding. A resource-based approach should be used, due to the unique character and availability of natural resources in a city like Victoria. This approach enables the City to identify the natural resources unique to Victoria, and define how those areas will be used in order to best satisfy the needs of the citizens. There are no national standards for natural areas within a city due to the extreme variations found in natural resources from region to region. Victoria should, through the established planning processes, adopt open space policies, which reflect the unique natural resources of the community. Natural areas or open lands with environmental significance should not be included in a level of service standard since these lands have limited capability for recreational use beyond desirable and limited passive recreation, interpretation and environmental education. It is important that natural areas not be perceived as surplus land which can be used for more active forms of recreation as the need arises.

Indoor Recreation

Indoor recreation centers provide a wide variety of recreational opportunities in a controlled setting which allows citizens to enjoy year round activities. A recreation center may include amenities such as a walking/jogging track, fitness rooms, gymnasium, indoor swimming pool, racquetball/squash courts, meeting facilities, arts and crafts facilities and day care facilities. The key to a successful recreation center is the flexibility built into the design of the center, which allows for the same facility to be used for multiple activities. This enables a recreation center to accommodate changing interests and trends with little or no physical improvements required to the facility itself. For example, a large multi-purpose room in a recreation center may be used for a business meeting/convention in the morning, while the same room can be divided up for after school group programs in the afternoon.

The following table contains the types of parks proposed for the Victoria Parks System and associated development information.

Table 4

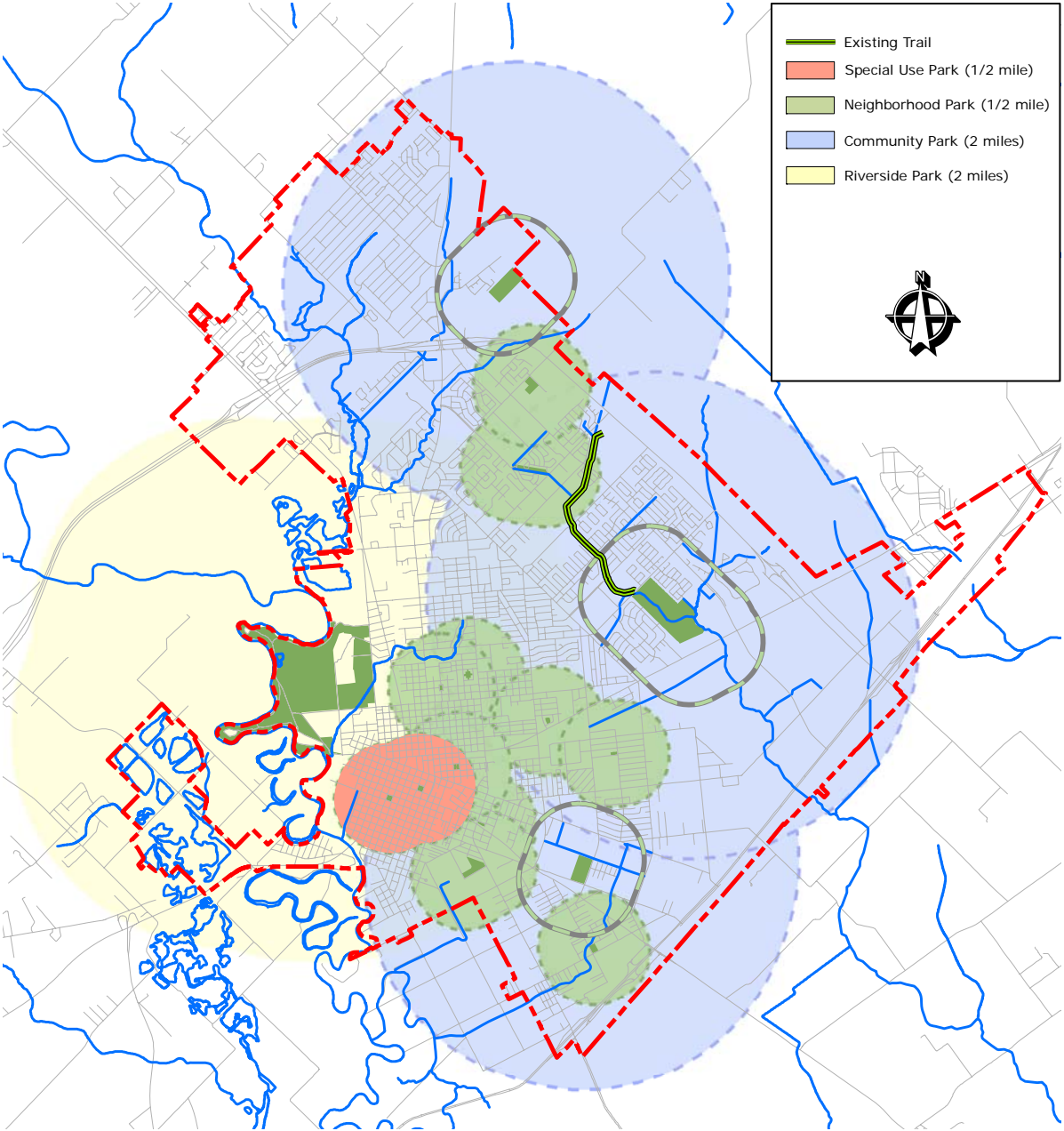
Park Classifications

Classification	Service Area	Size	Population Served	Typical Facilities	Development Cost*
Pocket Park or Ornamental Park	1/4 Mile	Less than 1 acre	500-2,500	Landscaping, fountain, sidewalks, gazebo & benches	\$65,000 - \$80,000 Per Acre
Neighborhood Park	½ Mile	5 acres to 10 acres	2,000-10,000	Playground apparatus, picnic area(s), pavilion, play courts, play fields, restroom, landscaping & parking	\$35,000 - \$45,000 Per Acre
Community Park	2 Miles	40 acres to 150 acres	10,000-50,000	Tennis courts, sports fields, playground apparatus, picnic area(s), pavilions, walking/jogging trails, swimming pools, open space, landscaping, recreation centers, restrooms & parking	\$25,000 - \$35,000 Per Acre
Regional Park	10 Miles	200 acres to 1,000 acres	Entire Urban Area	Sports fields, tennis courts, lakes, golf courses, bridle paths, swimming complexes, campgrounds, hike/bike trails, nature areas, restrooms & ample parking	\$2,000,000 and up
Special Use Park	Varies	Determined by primary use	Varies - dependent on primary use	Concentration of one or two of the following: baseball/softball complex, soccer fields, tennis centers, sports stadiums, golf courses, performing arts facilities, amphitheaters & ornamental gardens	Varies - dependent on primary use
Indoor Recreation Center	Varies	10,000 Sq. Ft. Minimum	30,000	Walking track, fitness rooms, gymnasium, weight room, racquetball/squash courts, indoor swimming pool, meeting/convention facilities, arts and crafts rooms & day care facilities	\$2,000,000- \$5,000,000
Greenbelts & Natural Areas	Varies	Varies	5,000 to entire community	Landscaping, multi-purpose trails, benches, information kiosks, telephones, exercise courses & drinking fountains	\$250,000 - \$500,000 per mile for Greenbelts
Trails	Varies	Varies	2,500* ¹	All weather or natural trail surfaces; benches, exercise equipment, lighting, kiosks & informational signage.	\$500,000 - \$800,000 per mile

* Figures based on a national average.

*¹ Standard for all weather trails and nature trails; Bike trail standard is 5,000

Existing Park Service Areas



FACILITIES INVENTORY

The following inventory was provided by the City of Victoria Parks and Recreation Department and was conducted in 2011 for the Park 2025 Master Plan.

6.1 Existing Parks

The City of Victoria park system contains approximately 846 acres of park land for use by area residents. Riverside Park is a 565.08 acre park (368 developed acres) with lighted ballfields, pavilions with electricity, picnic units with barbecue pits, disc golf, basketball court, lighted restrooms, lighted playgrounds, open play areas, fitness trails, jogging trails, sand volleyball courts, a golf course, RV park and a zoo. Community Center Park is approximately 73 acres with lighted restrooms, Youth Sports Complex, lighted adult softball fields, lighted basketball court, lighted tennis courts, lighted swimming pool, covered picnic units, playgrounds and parking. Hopkins Park consists of approximately 11.5 acres with a pavilion, picnic units, lighted restrooms, playground, and a basketball court.

**Table 5
Public Park Land Inventory**

	Name	Type	Size (Acres)	Assets
1	Boulevard Park	N	1.40	½ basketball court, playground, signage
2	Brownson Park	N	0.90	Full basketball court, playground, 3 picnic units with grills, open space
3	Community Center Park	C	73.17	Covered full basketball pavilion, swimming pool, playground, 2 soccer fields, 4 lighted tennis courts with pro shop, 7 covered picnic units with bar-b-que grills, 12 lighted ballfields and signage
4	De Leon Plaza	S	1.77	Bandstand, 3 monuments, 16 decorative lights, 39 benches, state and national historic site
5	Ethel Lee Tracy Park	C	30.50	Amphitheater, pavilion, sand volleyball court, playground, basketball court, 2 unlighted tennis courts, horseshoe pits, 9 hole disc golf course
6	Greenbelt Park	N	12.87	Open space, lighting, signage
7	Hopkins Park	N	11.58	Full basketball court, playground, pavilion, benches, signage
16	Lone Tree Creek Park	C	127.99	Currently under development – Water playground, shade structure, restroom, practice ball fields, natural area and parking
8	Martin Luther King, Jr. Park	N	1.72	Full basketball court, playground, pavilion, benches, signage
9	Meadowlane Park	N	1.20	Playground, multi-use court, benches, 5 picnic units with bar-b-que grills
10	Memorial Square	N	1.20	5 monuments, signage

11	Pine Street Community Park	N	3.30	Full basketball court, 5 picnic tables, playground, 2 backstops, signage
12	Queen City Park	N	2.11	Full basketball court, pavilion, signage
13	Riverside Park	R	565.08	Administration building, rose garden, children's park, 27 hole golf course, 2 Challenger ballfields, baseball stadium, 2 senior league fields, duck pond, picnic units with grills, 2 playgrounds, boat ramp, ½ basketball court, 1.5 mile walking trail, basketball court, 3 restrooms, 5 pavilions, 18 space RV park, paddling access trail, 2 sand volleyball courts, 3 gazebos, signage, zoo
14	Ted B. Reed Park	N	10.00	Pavilion with restroom, 2 handball courts, playground, ¼ mile walking trail, basketball court, baseball backstop, signage
15	Will Rogers Park	N	1.90	Full basketball court, playground, open space, signage
Total			846.69	

C – Community Park
N – Neighborhood Park
R – Regional Park
S – Special use Park

**Table 6
Other Service Providers and Facilities**

	Name	Type	Facilities Offered
1	Benchmark Homeowners Association	Private Park	Lake and parking
2	Boys & Girls Club	Recreation Center	Basketball court, recreation rooms, gymnasium, open space
3	Carver Center	Recreation Center	Under renovation
4	Century Lanes	Bowling Facility	Bowling lanes with restrooms and concession facilities
5	Citizens Healthplex	Health Center	Private health club
6	Colony Creek Country Club	Country Club	18 hole golf course, tennis courts, club house and swimming pool
7	DeTar Health Center	Health Center	Private health club
8	Faith Academy	Private School	Multi-use field, and gym (airport)
9	Nazereth Academy	Private School	Playscape, basketball court and open space
10	Northcrest Pool	Swimming Pool	Private swimming pool, concessions and parking
11	Oak Hill Pool	Swimming Pool	Private swimming pool, concessions and parking
12	Our Lady of Victory	Private School	Playscape, baseball field, football field and open space
13	Presbyterian Day School	Private School	Playscape and open space
14	Primrose Pool	Swimming Pool	Private swimming pool, concessions and parking
15	Putt-Putt Golf	Miniature Golf	Miniature golf facility with restrooms and concessions

16	Senior Citizens Center	Senior Center	Clubhouse
17	Shenandoah Homeowners Association	Swimming Pool	Private swimming pool and bath house
18	South Texas Zoological Society	Zoo	Zoo, concessions and parking
19	St. Joseph High School	Private School	Football field, four softball fields, soccer field, concessions and parking
20	Tanglewood House of Victoria, Inc.	Swimming Pool	Private swimming pool, concessions and parking
21	Trinity Episcopal School	Private School	Baseball field, soccer field, gym, playscape and open space
22	University of Houston	Educational Facility	Soccer Field
23	Victoria Christian School	Private School	Playscape and open space
24	Victoria College	Educational Facility	Gym and tennis courts
25	Victoria Country Club	Country Club	18 hole golf course, tennis courts, club house and swimming pool
26	Victoria County	Saxet Lake Park	Pavilion, playground, fishing, boat ramp and restrooms
27	Victoria Independent School District	Aloe Elementary	Playscape, gym, and open space
		DeLeon Elementary	Playscape, basketball court, gym, and open space
		Chandler Elementary	Playscape, walking track, basketball court, gym, and open space
		Dudley Elementary	Basketball court, 2 playscapes, gym, and open space
		Hope School	Handicap accessible equipment and open space
		Hopkins Elementary	Playscape, basketball court, gym, and open space
		Schorlemmer Elementary	Playscape, basketball court, gym, and open space
		O'Connor Elementary	Playscape, basketball court, gym, and open space
		Rowland Elementary	Playscape, basketball court, gym, and open space
		Shields Elementary	Playscape, basketball court, gym, and open space
		Smith Elementary	Playscape, basketball court, gym, and open space
		Vickers Elementary	Playscape, basketball court, gym, and open space
		Crain Elementary	Football field, tennis courts, gym, and open space
		Cade Middle School	Football field, tennis courts, gym, and open space
		Howell Middle School	Football field, tennis courts, gym, and open space
		Patti Welder Middle School	Football field, ¼ mile track, gym, and open space
		Stroman Middle School	Football field, track, softball field, baseball field, gym, and open space
Liberty Academy	Natatorium, Special Events Auditorium, Football Stadium, Soccer field, gym, tennis courts, track, and parking		

		West High School	Tennis courts, track, football field, soccer field, baseball field, softball field and open space
		East High School	Tennis courts, baseball field, track, soccer field, softball field, football field, gym, and open space
28	Victoria Park Improvement Association	Golf Course	27 hole golf course, club house, concessions, cart sheds, restrooms and parking
29	Victoria Youth Soccer Association	Soccer Complex	8 non-lighted fields
30	Woodlawn Bowling	Bowling Facility	Bowling with restroom and concession facilities
31	Woodway Homeowners Association	Private Park	Trails, picnic tables and open space
32	YMCA	Recreation Center	Indoor pool, racquetball court, weight room, basketball court, sauna, aerobic floor, youth center

6.2 Recreation Programs (Youth Sports)

The City of Victoria operates several recreational programs. Other entities, such as schools and non-profit groups also provide a large number of sports programs.

6.3 Facilities Inventory Changes

The following changes have been made to Victoria's park system inventory since the completion of the 1996 Park, Recreation and Open Space Master Plan. The City of Victoria Parks and Recreation Department provided the following inventory.

PARK SYSTEM IMPROVEMENTS SINCE 1996

1996

Brownson Park	\$17,000
• Play equipment	
• Sidewalks	
Community Center Park	\$37,000
• Play Equipment	
Hopkins Park – Phase 1	\$37,638
• Play equipment	
Queen City Park	\$21,000
• Play equipment	
Riverside Park - Nature Trail	\$46,216
• ½ mile of hard surface	
• Play equipment	

1997

Boulevard Park	\$23,635
• Play equipment	

<ul style="list-style-type: none"> • ½ Basketball court • Sidewalk • Benches 	
Hopkins Park – Phase 2	\$5,172
<ul style="list-style-type: none"> • Electrical improvements to pavilion • Handicap accessible picnic tables • Bar-b-que grills 	

1998

Ted B. Reed Park – Park Development	\$560,000
<ul style="list-style-type: none"> • Pavilion • Play equipment • Handball courts • Walking trails • Practice ball field 	

1999

Sports Complex Improvements – Phase 1	\$146,000
<ul style="list-style-type: none"> • Renovation of Field 3 	
Riverside Park	\$620,193
<ul style="list-style-type: none"> • Repairs of flood of '98 damage <ul style="list-style-type: none"> ○ Fencing – Riverside Stadium, Lowe & Rippamonti Fields ○ Walking trails ○ Paving ○ Riverbank stabilization ○ Volleyball court ○ Building repairs ○ Replace play equipment 	

2001

Martin Luther King, Jr. Park	\$37,833
<ul style="list-style-type: none"> • Pavilion repairs • Play equipment • Sidewalks • Lighting 	
Community Center Park	\$13,965
<ul style="list-style-type: none"> • Slide and diving board 	

2002

Riverside Park	\$52,000
<ul style="list-style-type: none"> • Installation of street lights/electrical improvements 	
Ethel Lee Tracy Park Development	\$1,294,000
<ul style="list-style-type: none"> • Amphitheater • Pavilion/restrooms • Disc Golf • Tennis courts • Practice ball fields • Walking trails • Covered picnic units • Play equipment • Horseshoe pits 	
Community Center Park	\$44,880

<ul style="list-style-type: none"> • Pool pump repair • Giant umbrella • Chairs and tables 	
Softball Complex - Renovate 3 Softball Fields	\$374,054

2003

Martin Luther King, Jr. Park	\$51,308
<ul style="list-style-type: none"> • Install 3 covered picnic sites • Sidewalks • Lighting • Landscape 	

2004

DeLeon Plaza	\$255,018
<ul style="list-style-type: none"> • Bandstand construction 	
Riverside Park	\$63,825
<ul style="list-style-type: none"> • Removal and installation of new play equipment 	
Meadowlane Park	\$22,634
<ul style="list-style-type: none"> • Play equipment • Picnic shelter 	
Municipal Pool	\$7,700
<ul style="list-style-type: none"> • Roof replacement 	
Pine Street Community Park	\$3,060
<ul style="list-style-type: none"> • Installation of backstops 	

2005

Riverside Park	\$122,878
<ul style="list-style-type: none"> • Play equipment and fall zone • Riverside Stadium improvements • Duck Pond improvements • Rose Garden expansion • Hike/Bike trail improvements 	
Hopkins Park	\$3,023
<ul style="list-style-type: none"> • Restroom improvements 	
Community Center Park	\$2,200
<ul style="list-style-type: none"> • Tennis building roof replacement 	

2006

Riverside Park	\$195,598
<ul style="list-style-type: none"> • Replace sports lighting Stadium • Stadium improvements • Replace fountain at Duck Pond • Restroom #1 renovations • Botanical Gardens roof replacement 	
Hopkins Park	\$7,040
<ul style="list-style-type: none"> • Pavilion roof replacement • Pavilion electrical service upgrade 	
Community Center Park	\$24,000
<ul style="list-style-type: none"> • Construct two (2) soccer fields 	

2007

Riverside Park	\$8,874
• Guardrail installation (McCright Drive)	
• Grover's Bend restroom improvements	
Youth Sports Complex	\$10,000,000
• Seven (7) baseball fields	
• Five (5) softball fields	
• Concession stand	
• Parking facilities	
DeLeon Plaza	\$4,700
• Sidewalk renovations	

2009

	\$398,108
• Victoria Skatepark	
• Pump Track	
• Lowe Fields improvements	

2010

	\$21,500
• Improvements to Tracy restroom	
• Duck Pond Gazebo renovation	

2011

	\$81,084
• Skatepark improvements	
• Restroom improvements	
• Lowe Field restroom	
• Trail improvements	
• Picnic site improvements	

Total **\$ 14,522,052**

ANALYSIS OF NEEDS

The recreational needs for the City of Victoria were determined using a combination of the three planning approaches (demand based, standard based and resource based) generally used in conducting a Needs Assessment. This combination allowed the desires for recreational opportunities expressed by citizens with different interests to be compared with NRPA standards while at the same time recognizing the unique natural attributes of the City of Victoria.

The Needs Assessment integrates supply and demand. The supply is provided by the existing park and recreation facilities. The demand is identified through the stated goals and objectives, the concept of level of service, national standards, unique natural resources, and most importantly, input from local citizens. Local input was obtained through the Parks and Recreation Commission, and the citizen survey. The result is a balanced analysis, which reflects the parks and recreation needs and desires of the citizens of Victoria through 2025.

When determining recreational needs, it is important to consider the growth of the community. Victoria's estimated population for 2011 is 62,592 based on figures provided in the 2010 Census data. The population projection for 2025 is 74,080. These projections are based on the population estimates conducted for the Comprehensive Plan and reflect growth patterns identified over the last ten years.

Table 7
City of Victoria Population Projections

2010	2025
62,592	74,080

Source: 2010 Census and City of Victoria Development Services

A citizen survey seeking attitudes and opinions regarding the City of Victoria Parks System was offered City wide using Survey Monkey as the delivery mechanism in March of 2011. The results of this survey were helpful in quantifying the specific recreational needs of Victoria residents as well as providing a general overview of the existing network of parks. The following are highlights from the surveys: (See Appendix A for tabulated results)

- 574 individuals responded to survey.
- 77% indicated City parks are excellent to average.
- 67% desire a variety of parks and recreational facilities in the parks.
- 58% desire additional neighborhood parks.
- 73% feel additional community parks are needed with facilities such as trails, playgrounds, and nature areas.
- Several comments listed maintenance and security as top priorities.
- Additional comments wanted maintenance of restroom facilities as a high priority.

7.1 New Parks – Needs

In the 2000 Parks, Recreation & Open Space Master Plan nearly 72 percent of citizens claim they do not live within ½ mile of a city park. This has not significantly changed in the last eleven years since there has not been any additional parks developed in this timeframe. 58 percent of respondents to the citizen survey desire additional neighborhood parks and an overwhelming 73 percent desire additional community parks. This is substantiated by the service areas shown for the existing park system on Map 1. Based on the Park Classification System, the desired service area for each type of park and the demand for more parks, additional neighborhood parks and community parks are needed.

Neighborhood Parks

There are clearly three areas of the city that are under served by the existing park system with regard to neighborhood parks. A band of residential neighborhoods exist in the north central portion of Victoria which is not within the service area of a neighborhood park. These residences lie primarily between Airline and Mockingbird, east of Navarro and west of John Stockbauer. Additionally, the neighborhoods located in the north and northwest portion of Victoria are not in the service area of a neighborhood park. City staff has indicated that residential growth will likely continue in the north and northwest portions of the city. There is a need to develop two neighborhood parks north of Zac Lentz and west of Hwy 77. Additionally, there is a need to develop a neighborhood park in the north section of the City where development is likely to occur. These two major roadways serve as pedestrian barriers between the existing parks in Victoria and the residential development occurring in the northwest portion of the city. Additionally, there is a need to develop one neighborhood park between Airline, Mockingbird, Navarro and John Stockbauer. This equates to a total need of at least four additional neighborhood parks for Victoria through the planning period.



Rose Garden at Riverside Park

Community Parks

As previously mentioned 73 percent of Victoria citizen's support the development of additional community parks. Citizens also ranked water park as the number one facility priority and trails ranked as the second highest priority when all weather and nature trails are combined. Using a demand based approach, which is supported by the standards set forth in the Park Classification System; there is a need to develop a community park in the north western portion of the city.

7.2 Park Upgrades - Needs

The City of Victoria has renovated many of the existing parks since 2010. Playground equipment has been upgraded to comply with current safety guidelines established by the Consumer Product Safety Commission (CPSC) in 11 city parks containing playgrounds. Renovating and improving the existing parks is supported by overwhelming responses in the comments section of the Citizen Survey. Additionally, citizens ranked playgrounds sixth among desired recreational facilities in the survey. While the City has taken an aggressive approach to the replacement and improvement of playground equipment in recent years, playground safety is an ongoing process. Therefore, the City needs to continue its efforts with

regular inspection and replacement of playground equipment, as necessary, to ensure that all public playgrounds throughout Victoria meet the ever changing minimum standards as published by CPSC and accessibility standards required under the Americans with Disabilities Act (ADA).

Riverside Park

Riverside Park, located in western Victoria, is the city's largest and most used park. With approximately 565 acres and more than four miles of Guadalupe River frontage, this park is a resource that will continue to be a valuable trademark for the park system in Victoria. Riverside Park contains a wide variety of both active and passive recreational opportunities for area residents. Amenities include the Texas Zoo, historical Riverside Stadium, lighted softball fields, lighted baseball fields, nature trails, Disc Golf Course, Riverside Golf Course, Recreational Vehicle facilities and open space to name a few. As expressed by citizens throughout the public input process, there is almost no limit to the recreational opportunity potential at Riverside Park.

A historical element of Riverside Park that should be continued is the improvements to Riverside Stadium. This historic stadium hosts both varsity and junior varsity baseball games for Victoria ISD and St. Joseph High School as well as University of Houston-Victoria and Victoria Generals of the Texas Collegiate League. Much of the stadium, including its original grand stands and wooden bleachers, has been upgraded through efforts from a local group, Friends of Victoria Baseball. Citizens ranked historical elements as the fifteenth highest facility priority. Opportunities exist to capitalize on Victoria's rich history. Develop historic interpretative displays depicting the history of the Indians, Spanish settlers and other historical aspects. North of, but adjoining Riverside Park, there is a potential historic site to preserve for future generations. Acquiring historic sites should be a priority, such as the acequias, the Spanish word for irrigation canal, which is north of, but adjoins Riverside.



Riverside Stadium

Athletic Facilities - Needs

Soccer

The Victoria Youth Soccer Association currently utilizes property located at the airport for their games. Improvements include eight soccer fields and restroom/concession facilities. Using the standards based approach of one field per 6,000, there are two additional soccer fields needed for this planning period. The association does not have a long term guaranteed location at the airport. This plan will address the need to develop a soccer complex similar to the Youth Sports Complex that addressed the need for baseball and softball.

Adult Softball

Adult softball programs are provided by the Victoria Parks and Recreation Department and currently utilize the fields adjacent to the Community Center. Improvements include four lighted softball fields and restroom/concession facilities. Utilizing a standard of one field per 10,000 population, the adult softball programs provided by the City will need an additional softball field by 2025. The popularity of adult softball has waned in the last five years. This is evident across Texas and the US. The economy and sponsors for teams may have contributed to the decline of softball activities. This plan will address the need to renovate the current facilities and not add any fields until the use of the the current fields increases. This should be evaluated during the review period.

Youth Softball

The Victoria Youth Softball Association currently utilizes five fields located at the Youth Sports Complex. There are an additional nine available fields located on school district and parochial property. Based on the standard of one field per 6,000 population, the City will need an additional softball field by 2025. This plan recognizes the fact that an additional field is needed; however, there are no plans to add any fields during this planning period. Staff will evaluate this need every five years during the review and update of the master plan.

Youth Football

The Victoria Youth Football League currently utilizes the practice football facilities located on school campuses. Citizens ranked new football fields for youth 25th out of 29 categories. League officials should continue to work with Victoria ISD to ensure the current facilities are available for the youth football league throughout the planning period. Though the need for a city maintained game field is not anticipated during the planning period, it should be evaluated during the review period to address changing needs.

All of the sports organization representatives expressed concern regarding the availability of sports practice facilities in Victoria. Traditionally, teams have utilized undeveloped land throughout the city that is typically privately owned. As development has continued, the available land for sports practice fields has diminished. There are 76 available backstops in parks and non-park land. The City has 13 available backstops at various parks. The remaining 63 are on private property and school district property. Because formal game fields are not required for practices and use is seasonal, the City should consider providing lawn quality open spaces that can be used as practice facilities by various sports organizations as well as for unstructured recreation by the general public.

The following table contains the number of fields currently provided by the park system, the projected team growth for the various sports, and the projected need for additional facilities.

**Table 8
Athletic Facilities**

	2012 Fields/ Courts Provided	2012 Fields/ Courts Required (1)	2025 Fields/ Courts Required (1)
Boys Baseball Fields-minor	7	7	8
Boys Baseball Fields - major	6	6	7
Girls Softball Fields	14	13	15
Adult Softball Fields	4	5	5
Youth Soccer Fields	10	16	19

(1) Number of youth fields required calculated at 1 field per 4,000 population for soccer and 6,000 populations for baseball and softball teams. Number of adult fields required calculated at 1 field per 10,000 population.

Trails

In 2007, the two mile Lone Tree Hike and Bike Trail was developed using the standards set forth in the 2000 Master Plan. Due to the success of this trail our citizens have requested

additional trails. The citizen survey asked respondents to rank 29 different facilities. All weather trails ranked fifth, Mountain Biking trails ranked seventh, and natural trails ranked ninth as the most requested facilities. Trails would be the highest priority if all trail responses were combined.

There are many prime areas for trail development along riparian (river, creeks) corridors, e.g., North Outfall (Loop 463 & Navarro to Main Street) or Jim Branch Outfall (between Ben Wilson and Ben Jordan) or West Outfall (Airline to Riverside Park). There is opportunity to connect with existing trails in Riverside Park or sidewalks along Vine that could connect via new trail along the Hwy 87 corridor.

The citizen's survey indicated nature areas as the 8th most important facility to place in parks. A new trail and nature area should be developed at Lone Tree Creek Park. The trail would tie into the existing sidewalk on Airline Road and parallel to the Tanglewood subdivision into the new natural area of Lone Tree Creek Park.

7.3 Conclusions

Based on the needs identified above, the City of Victoria has the opportunity to provide its citizens with a park system that satisfies the many recreational needs and desires of area residents. As indicated by many survey comments, residents feel that Riverside is a jewel that needs to be developed, though carefully and thoughtfully. There are many projects currently under development that may have significant impact on future development possibilities at the park. The City needs to ensure that this park is developed in a planned manner that promotes an overall park.

Natural Open Space and primitive recreational opportunities are key components of the Riverside Park experience; thus the City needs to protect the existing natural open space. Additionally, the City should identify adjacent properties for acquisition and preservation that contain the natural open space, historically significant areas and attributes.

The City should continually identify and acquire parcels of land north and northwest of the current city limits for the future development of neighborhood parks. This will ensure that the City of Victoria has adequate parkland set aside to accommodate future residential growth. Adequate planning will enable the City to utilize a proactive approach for future park development and prevent the need for reactive, infill style park planning.

Trails, all-weather or natural, should be developed throughout the City. The opportunity for developers of new subdivisions exists to build trails and connect to sidewalk or trail system. A successful trail system will incorporate the elements that the public wants and desires. The public should have input into design characteristics, such as, lighting, security elements, exercise stations, etc.

One of the keys to a successful park network is the establishment of multiple partnerships for the future development of recreational facilities. For example, future park locations should be adjacent to future school facilities when possible in order to minimize development and operational cost while maximizing use.

PRIORITIES AND IMPLEMENTATION

8.1 Parks, Recreation, and Open Space Priorities

Based on results from the Citizen Survey, the Parks and Recreation Commission adopted the following **Parks and Recreation Facility Priorities**, which are depicted in descending order.

Table 9
Facility Priorities

Rank	Facility
1	Water Park
2	Amphitheater w/ stage
3	Dog Parks
4	Restrooms
5	Trails – all weather
6	Playgrounds
7	Mountain biking trails
8	Nature areas
9	Trails natural
10	Water playgrounds
11	Exercise stations along trails
12	Baseball Fields
13	Decorative gardens
14	Paddling access trails
15	Historic/archaeological areas
16	Disc golf course
17	Fishing areas
18	Equestrian areas
19	Practice ball fields
20	Recreation center
21	Youth soccer fields
22	Boat ramp
23	Swimming pool
24	Pavilions
25	Football field- youth
26	Soccer Fields – Adult
27	Tennis Courts
28	Skatepark
29	Basketball court

8.2 Recommendations

Based on the citizen survey, and national standards, the following projects for parks, recreation, and open space are recommended. The cost estimates shown for each project merely represent probable costs and are not a guarantee of actual construction costs. The project estimates do not include fees associated with planning, engineering and/or architectural work that may be required.

	Project	Estimated Cost
1	Upgrade/rebuild restrooms at Community Center Park, Hopkins Park, & Grover's Bend	\$150,000
2	Develop Fox's Bend into Trail for bikes, runners & walkers	\$77,500
3	Develop Mountain Bike Route in Riverside Park	\$10,000
4	Clear/remove debris along Guadalupe River corridor and West Outfall	\$100,000
5	Develop trail along the Jim Branch Outfall connecting Ben Wilson and Ben Jordan's streets	\$400,000
6	Renovate and update the Adult Softball Complex fields	\$250,000
7	Rebuild Red River Street from Vine to Riverside Park	\$1,700,000
8	Renovate the trail at Reed Park	\$135,000
9	Add security lighting in Riverside Park from Rose Garden to Riverside Stadium	\$250,000
10	Develop three (3) information stations in Riverside Park	\$75,000
11	Develop Grover's Bend into Trail for bikes, runners & walkers	\$90,000
12	Develop a water playground in the north section of the City	\$500,000
13	Convert the municipal swimming pool to a large water playground	\$500,000
14	Acquire/Develop Neighborhood Park in NW section	\$750,000
15	Convert the storage area on Stayton to a restroom	\$50,000
16	Develop soccer field complex at the Community Center	\$1,000,000
17	Acquire/Develop Neighborhood Park in north section	\$750,000
18	Expand the Disc Golf Course to 27 holes	\$5,000
19	Acquire additional land north of Riverside Park to preserve historical and natural resources	\$200,000
20	Add RV spaces to the Youth Sports Complex/Community Center	\$50,000
21	Develop a Dog Park at existing park	\$150,000
22	Acquire/Develop Neighborhood Park in N section	\$750,000
23	Develop historical interpretative displays at Riverside Park	\$25,000
24	Develop hike/bike trail along North Outfall	\$1,225,000
25	Add power along McCright Drive corridor for events and programs	\$75,000
26	Develop hike/bike trail along Hwy 87 corridor connecting with North Outfall trail	\$1,000,000
27	Develop Nature Trail at Lone Tree Creek Park	\$200,000
28	Acquire/Develop hike/bike trail along West Outfall	\$600,000
29	Acquire/Develop Community Park in NW section	\$2,000,000
30	Acquire/Develop Neighborhood Park in central section	\$750,000

NOTE: Costs are preliminary estimates only and prepared without the benefit of detailed engineering data. All costs shown are based on 2011 dollars. Final construction costs will vary depending on the elements selected.

During the planning process several projects were identified that could be developed with a public/private partnership.

1. Develop kayak/tube rental facility
2. Develop an equestrian facility for rental of horses
3. Develop a zip line course in Riverside Park
4. Develop a challenge ropes course
5. Develop a waterpark with lazy river and water play areas
6. Develop a train system in Riverside Park

8.3 Existing and Available Mechanisms

In order to implement this park and open space plan, there are a variety of funding mechanisms and tools available for use by the City of Victoria. These include:

SENATE BILL 376-4B - SALES TAX REVENUES

Funds generated by this special sales tax can be used for developing public recreational facilities.

TEXAS RECREATION & PARKS ACCOUNT PROGRAM

This program, administered by Texas Parks and Wildlife, is a matching grant program, which may be used to aid communities in acquisition and development of parks and open space (see Appendix B for additional information). This grant program includes the Outdoor Recreation Acquisition and Development Program and the Texas Recreation & Parks Account Indoor Recreation Program. The Texas Recreation & Parks Account Small Grants Program is a matching grant program which may be used to aid communities with a population less than 50,000 in the development of parks and open space (see Appendix A for additional information).

TEXAS RECREATIONAL TRAILS FUND

The Texas Parks and Wildlife Department administers the National Recreational Trail Fund through a provision in the Federal Highway Bill. The National Recreational Trail Grant provides 80% matching funds (maximum \$100,000) for both motorized and non-motorized trail projects in local communities for hikers, cyclists, horseback riders, off-road motor vehicles, and nature enthusiasts. Funds can be utilized to construct new recreational trails, improve/maintain existing trails, develop/improve trailheads or trailside facilities, and acquire trail corridors. Eligible sponsors include city and county governments, state agencies, river authorities, water districts, MUDs, school districts, federal land managers, non-profit organizations, and other private organizations.

PAY AS YOU GO

This method of financing park improvements involves budgeting for land acquisition, development, and maintenance of park facilities through the city's annual budget process. Allocations for park improvements are made and spent annually through the standard budget process.

GENERAL OBLIGATION BONDS

These bonds are issued by the city following an election in which the voters authorize their issuance for specific stated purposes, as well as the necessary tax increases to support them. These bonds pledge the property or ad valorem taxing power of the city.

CERTIFICATES OF OBLIGATION

These certificates have basically the same effect, as general obligation bonds except they do

not require an election to authorize them. An election can be petitioned by five percent of the registered voters of the city. These certificates are issued on the authorization of the City Council. Repayment is based on the property taxing power of the city, utility system revenues, or a combination of the two.

USER FEES

This method of financing requires the eventual user of each park to pay a fee for the use of each facility. Fees to be charged users can be established to pay for debt service, maintenance, and operation of the park system.

PRIVATE OR CORPORATE DONATIONS

Donations from foundations, corporations, and/or private individuals are often used to acquire and develop parks. The city should constantly identify and pursue opportunities to receive such funding for parks. One avenue for receiving donations is through the use of the Texas Parks & Recreation Foundation. This foundation has been developed to help all communities in the State of Texas to maximize the benefits of donations of land, property, and money.

8.4 Implementation Schedule

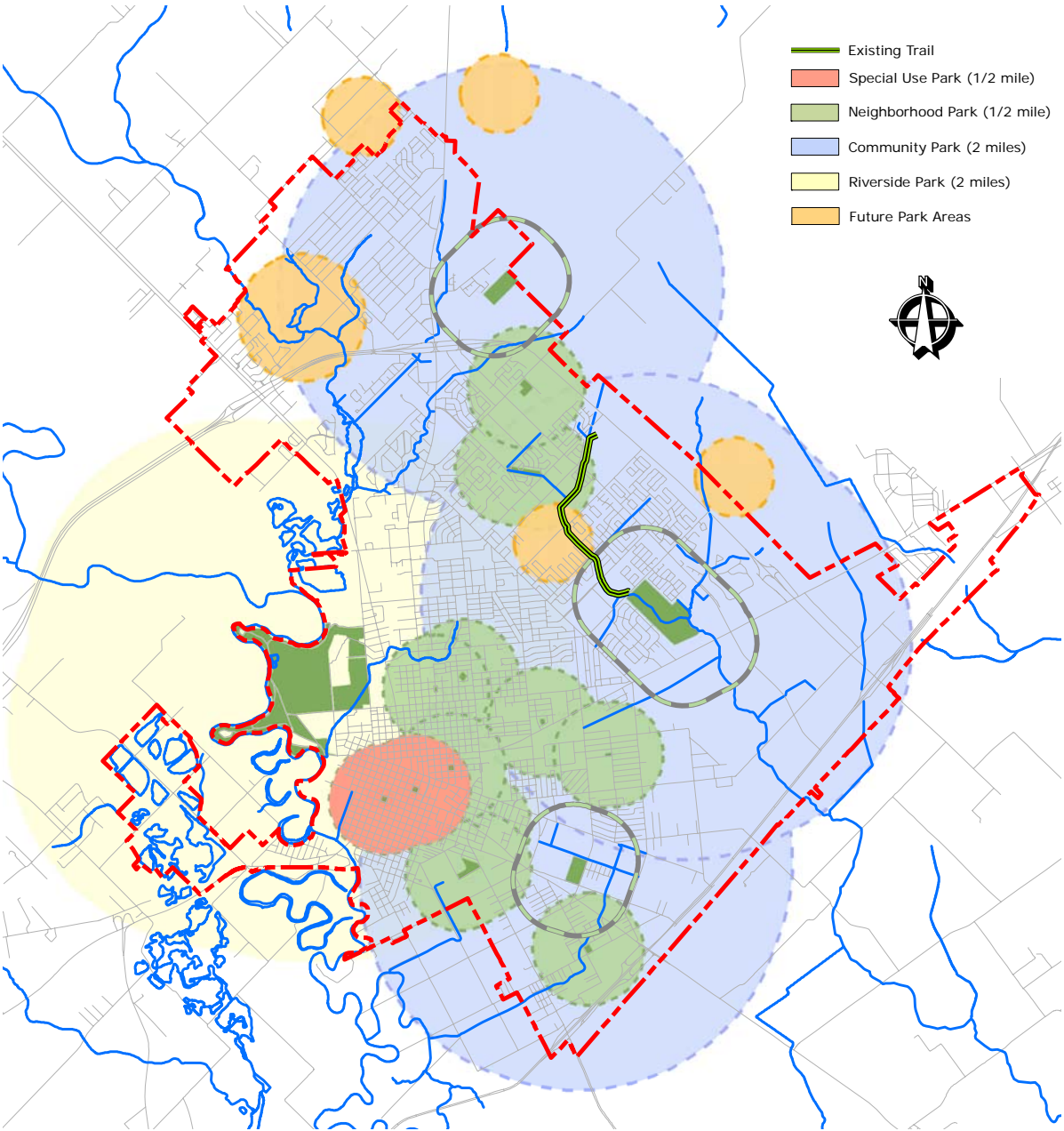
The following implementation schedule was adopted after evaluating the Citizen Survey, Facilities Priorities, and public meetings. It is important to note that the following schedule is intended to be a flexible guide for development of parks and recreational facilities over the next ten years for the City of Victoria. The City should evaluate and take advantage of any unforeseen opportunities that may arise that are not identified in the schedule or change the order of implementation as necessary.

	Project	Date	Estimated Cost	Potential Funding Source
1	Upgrade/rebuild restrooms at Community Center Park, Hopkins Park, & Grover's Bend	2012	\$150,000	General Fund
2	Develop Fox's Bend into Trail for bikes, runners & walkers	2012	80,000	General Fund, Donations
3	Rebuild Red River Street from Vine to Riverside Park	2012	1,700,000	General Fund, Sales Tax, Utility Fund
4	Develop Mountain Bike Route in Riverside Park	2012	10,000	General Fund
5	Renovate and update the Adult Softball Complex fields	2013	250,000	General Fund, User Fees
6	Add security lighting in Riverside Park from Rose Garden to Riverside Stadium	2013	250,000	General Fund, User Fees, Donations
7	Renovate the trail at Reed Park	2013	135,000	General Fund
8	Develop three (3) information stations in Riverside Park	2013	75,000	General Fund
9	Convert the municipal swimming pool to a large water playground	2014	500,000	General Fund, User Fees, Revenue Bonds
10	Develop Grover's Bend into Trail for bikes, runners & walkers	2014	90,000	General Fund
11	Develop trail along the Jim Branch Outfall connecting Ben Wilson and Ben Jordan's streets	2014	400,000	CDBG, Texas Parks and Wildlife Trail Grant

12	Acquire/Develop Neighborhood Park in north section	2015	750,000	General Fund, Grants, Donations
13	Expand the Disc Golf Course to 27 holes	2015	25,000	General Fund, Donations
14	Acquire additional land north of Riverside Park to preserve historical and natural resources	2016	200,000	General Fund, Grants, Sales Tax
15	Develop Nature Trail at Lone Tree Creek Park	2016	200,000	Texas Parks and Wildlife Trail Grant, Donations
16	Clear/remove debris along Guadalupe River corridor and West Outfall	2016	100,000	GBRA, Grants
17	Convert the storage area on Stayton to a restroom	2017	50,000	General Fund
18	Develop hike/bike trail along Hwy 87 corridor connecting with North Outfall trail	2017	1,000,000	General Fund, Trail Grant, Sales Tax
19	Add power along McCright Drive corridor for events and programs	2018	75,000	General Fund
20	Develop a Dog Park at existing park	2018	150,000	General Fund, Donations
21	Add RV spaces to the Youth Sports Complex/Community Center	2019	50,000	General Fund, User Fees
22	Acquire/Develop Neighborhood Park in N section	2019	750,000	General Fund, Bonds, Grants, Sales Tax
23	Develop hike/bike trail along North Outfall	2020	1,225,000	Bond, Sales Tax, Texas Parks and Wildlife Trail Grant
24	Develop historical interpretative displays at Riverside Park	2021	25,000	Hotel/Motel Funds
25	Develop a water playground in the north section of the City	2021	500,000	Bond, Sales Tax
26	Acquire/Develop Neighborhood Park in NW section	2022	750,000	Bond, Sales Tax
27	Develop soccer field complex at the Community Center	2023	1,000,000	Bond, Sales Tax
28	Acquire/Develop hike/bike trail along West Outfall	2023	600,000	Bond, Sales Tax
29	Acquire/Develop Community Park in NW section	2024	2,000,000	Bond, Sales Tax
30	Acquire/Develop Neighborhood Park in central section	2025	750,000	Bond, Sales Tax

TWPD – Texas Parks and Wildlife Development
CDBG – Community Development Block Grant

Future Park Service Areas





CONCLUSION

Currently, the City of Victoria has approximately 846 acres of parkland within its corporate city limits. This figure represents parks and open space in Victoria, which is owned or operated by the city. When compared to the existing population in the service area of 62,592 the resultant level of service of parkland is 13.51 acres for each 1,000 people.

This Parks, Recreation and Open Space Master Plan outlines park projects which add approximately 140 acres of parkland to the overall system. If every park project outlined in this plan is implemented within the planning period, based on the projected population growth, the level of service in the year 2025 will be 13.30 acres per 1,000 people.

This plan is to be utilized as a flexible tool, which should be reviewed annually and updated every two years to continue to reflect the unique recreational needs of the area. The City should take advantage of any unforeseen opportunities not identified in the plan that may arise, such as donations of land, facilities, etc., continually improving and enhancing the park system.

With the proposed additions to the park system that are outlined in this plan will come additional maintenance and operational needs in order to best utilize, manage, and care for both the new facilities and those that exist today. The proposed improvements contained in this plan will enhance the quality of life in the area and help ensure that the City of Victoria is able to keep pace with the growing recreational needs of the citizens of Victoria. The resulting benefits include improved quality of life, economic value, increasing property values, and pride in the residents of the area.

**Parks and Recreation Leisure Needs Questionnaire
Question #1**

1. First, we'd like to know in general, what do you think of our City's parks and activities?		
Answer Options	Response Percent	Response Count
Excellent	15.5%	89
Average	62.4%	358
Not so good	20.7%	119
No opinion	1.4%	8
<i>answered question</i>		574
<i>skipped question</i>		0

Question #2

2. On the first question, you indicated that we are "[Q1]". Would you let us know why?	
Answer Options	Response Count
	348
<i>answered question</i>	348
<i>skipped question</i>	226

Question #2: Response Text
They do not seem well organized and if they are thne the details of all the parks etc avaiable to the public needs to be better publicised.
Beautifully maintained parks and trails.
Maintenance
Average means that average. There is no pizzas.
people drive on the grass..
It's a little scary in the park and the only two times I've been the facilities were nasty
I do not feel that their enough activies nor publicize events diffently not when Moses was around...
No cutting edge activities, lots of criminal activity.
while Victoria has some nice parks and events, I find that it is lacking compared to other communities.
Because you have the basics at least, a trail to walk on, one good decent park for the kids, the one on grovers bend is ok but you removed the swings and now its just this let small playground with no kind of shade to them so on sunny days the playground is pretty hot to even play on. I have seen playgrounds with shades above them that are not trees and it works. The ethel lee park needs shading in the playground because and more seating for parents. The rose garden gazeboo needs to be watched for with the bees as well as the duck pond gazeboo.
not enough upkeep on parks. When something breaks its removed instead of replaced. Playgrounds are dirty. Not enough thought into parks and playgrouds usuage such as seating, shade etx.
Not enough going on.
The city tries...but most of the time theres things that just don't interest the younger age groups here.
I feel that you have improved but Victoria needs more festivities at the park including free outdoor concerts on a regular basis and pay for security if necessary. Need more volleyball, tennis and especially softball tournaments that will entice participation from visitors from surrounding counties.
I don't there is anything exceptional about Victoria's Parks...and Riverside Park is really going downhill. It really needs to be fixed up, when i was a kid, teenager and young adult, it was the place to be.
need more activities for teens to help teens stay from bad influnces
There is really nothin for kids..and when u have an event at the park u charge ..wat about us low income families who can't afford it. Then u go and pave a parkin lots for the new restaurant..which only the rich can afford....always for the rich people. Why can't they give donations for new playgrounds in the park...tight ass rich people..
To many outside ppl run the baseball org. @ the complex. BR @ childrens park are always dirty
The park has so much potential, but nothing is done with it. I remember in the 80's when every weekend it was packed!
victoria has great softball.baseball complex,but not fully utilized
They are not stellar, but they are not crummy either. They are average.
Nice facilities with lots of options for activities
Not very impressed with general cleanliness.
Just does not seem there is enough to do, the waterpark would be an asset
Parks are in need of facilities upgrade (old playgrounds, etc) and there aren't enough large, community and regional parks
seems like there is little to do that invloves all age groups. also there is very little public knowledge of events.
Riverside park has a lot of potential. Basic upgrades and additions could be completed - biking trails, complete running trails, landscaping. Making the park a more upscale living experience. I also think some of the additions might already been available but they are not heavily advertised.
There should be more summer evening activities at Riverside Park. It was always fun when bands played in the park.

There is not many running trails
I am a regular user of the parks and am extremely satisfied. I do wish they would get a dog park.
Several of the city parks are very nice general service parks, however, I would like to see additional special activities areas, such as interconnected hike and bike trails which allow people to hike and bike from their neighborhoods through a trail system to a park without having to dodge traffic on a street.
Lacking publicity.
many things to do and room to do it
Whith the upgrades that we have made to the the youth sports complex, and to the special events ares we don't seem to be attracting the big major events that would increase city revenue, such as big drawn out sports tournaments, concerts, which would benefit Hotels, Grocery sales, Fuel consumption, resturant sales etc. Our attractions are not that exciting (botanical gardens, Rose gardens, duck pond) with serious improvements needed to our Zoo, Golf course and others.
Roads and trails in poor condition
The roads in Riverside Park are in horrible shape. Not good for us bikers and runners.
Needs more hiking and biking trails.
no city hike and bike trails (only in the park). The river is not used as it could. too many runners on the street. city wasted a lot of money on the walking tail that crosses John Stock
raod codition no bike/run lane
Need to open up the rest of the park that is closed grover bend and fox. Victoria needs another park on the Nothside of town that is just as big as Riverside park. Need to have the out door concerts again, and maybe even have a late evening outdoor family movie on Wednesday or Sunday nights free of charge. Have people bring thier on lawn chairs, Of course no beer or glass. family can have a picinc while they watch a nice movie on a big out door screen. The equipment can be purchased by local bussiness donations. Open up some hot dog or vending stands at the park. Rebuild the rest rooms at river side. Have full time park rangers on sites.
Comparison with other facilities in other parts of the State and Country
Riverside park has no personality, kind of confusing with a stadium in the middle of the park. Victoria in general has no theme or does not stand for anything. Bring in art, statues , be unique. Duck pond is lacking. Tracy park i need a land expansion, bigger lake, another entrance. The parks in Victoria are por to say the least. You guys need to go out west, Arizona, Washington State, and take notes. If you stay in your little box, you'll always be in the little box. Activities do not make a park.
Need more equipment in the parks and safety patrols. Not everyone feels safe at Riverside
Need to get back on a regular mowing schedule to keep our parks beautiful. Needs lids for garbage cans to prevent animals from scattering trash. Something needs to be done to make people clean up trash after use or charge them for clean up. May be time for a park ranger . maybe a deposit charged on a picnic area. If areas not cleaned up, then user looses deposit.
I do not live in Victoria
I live on the south side of town . I would like to see new and improved items/equipment at riverside park and the smaller parks close by
There are few events that are held at the Parks (riverside) to bring families to. If there are, they are not advertised well. Need bike access with lanes or routes that connect the city, neighborhoods to the parks
I don't feel safe in Riverside Park. My family and I go to a few places in the park, but don't feel as though we can use all of it.
Need more pools, swim lessons, swim teams, etc. We are a community in a very hot part of the country in the summer. How better to spend a hot day than around and in a pool
Very few actives. The parks are great!
There isn't anything that sticks out in my mind as over the top. The parks are nice, average.
Would like a mountain bike trail
Would like to have more biking trails.
I think our parks are probably on average comparable to other City's parks - accomodating and offer multiple activities and amenities.
In Riverside Park, restrooms are scarey, horsemans arena looks bad, the river is hard to see.
VARIETY OF THINGS TO DO - PLAYGROUNDS, PICNIC AREAS, ZOO, BOAT DOCK, ETC.
We would like to see more tournaments with the opportunity to raise funds in support of organization, for example Little League, VGSA, SELECT
you people parking on the grass. You need a cop to drive thru sometimes to ensure of safety. maybe get a connesson stand on sundays. have someone show people how to canoe, charge a small fee. more access to river for fishing. a basket ball goal or two on different places. more nature trails marked.
While most all of the parks in Victoria are great very kid friendly, very few are as exercise and pet friendly. Those that do have decent tracks and trails don't include route maps and measures. In fact, I haven't been to one that even has mile markers. Also, many of them-such as the Hike and Bike Trail--don't have adequate lighting for those of us who enjoy running in the early to evening hours. As for pet friendly, Riverside is the only park in Victoria that I even find remotely comfortable bringing my pets to. Every city I have ever lived in, both big and small, have had at least one dog park. So, I often wonder why Victoria has does not.
we have the same as any other park- need more activities and better equipment
Riverside Park offers a wide variety of recreational activities. The Community Center hosts a multitude of various events/activities as well.
The park is alway ready for families and friend to get together

Park needs to be monitored more closely for gang activity.
Not user friendly, parking for some areas is not sufficient or just too far from picnic areas. Having to tote all your necessities for just a great day at the park takes all the fun out of it !
The natural surroundings are excellent. You just can't ask for a better natural platform.
Have a lot of potential to develop or improve existing facilities
Nothing is perfect, we have a great big park to enjoy. My family has always had a great time in the parks. Kids are a little older now. We used to go to the Zoo and Children's Park.
Should have been excellent. Parks & Rec is doing a good job with what funding is available.
i could not put excellent because then you would be up there with Austin.
Parks are clean
Better developed than most cities of our size.
I do not use the park much. I only use the golf course on a regular basis
The parks are geared for younger people and not teens.
Riverside Park
The handball courts at Ted Reed are in pretty bad condition. There is always galss, trash, rocks, graffitti, etc in them. Not to mention grass growing inside the walls.
The park has had several floods do a lot of damage and the park always rebounds quickly with little inconviences to the citizens
Not enough and they are not maintained well. Riverside Park has tons of trees to be trimmed.
lack of recreational programs and events
they are well maintained and the kids playground equipment is current
Nothing for Children to do
Riverside Park is such a jewel, but parts of it look dumpy.
the river and golf course
could be cleaner - too much trash - equipment could be better
I love Riverside parks. They are big, spacious and usually well-kept.
I believe the park needs to be cleaned up and could be put to more use for the community. Victoria has a beautiful park but effort and time needs to be put into it to make it something great for this city.
My wife does feel safe walking in Riverside park by herself.
more venues like the skate park or water activities would make the park system above average
traffic pattern is confusing.
I think we have grown to be better and better but we still have a ways to go. We are considering doing bike rentals here at SBR of Victoria to offer people to ride bike in the park but I would like to see continous activities. The frisbee golf is popular but if we had the trails & run routes w/ mile markers we could have more runners & walkers. If we had kayak rentals we might see more people utilizing the Guadalupe. In order for us to be above average I really picture Austin & all they have going on around Lady Bird Lake. I just visited Pflugerville Lake and AMAZING!
Maintenance of landscaping and improvements is uneven.
I feel like there could be so much more in our park, it's beautiful but some people feel like it's not safe to take your kids to because of the shady characters
It is very ethnically bias, it seems there are more hispanic based events than multi cultural events.
Ethel Lee Tracy park missing disc golf baskets, graffitti;
Need more 5k races throughout the year.
I don't think we have enough activities to draw people to the park
Need more info to public on what is available.
bathrooms are nasty and there is not much in the park no attractions
Doesnt compare to parks in cities of similar size. Would be nice if we could bring the train back, better walking trails, cleaner restrooms that do not attract perverts. Would also like to see a Minor League Baseball field.
Just not enough variety. I don't believe we're tapping into the true potential of Riverside Park
not enough activites
Seems that lots of folks are always enjoying the parks. Must be a reason.
Comparable with other cities of our size.
There is a big gap between average and excellent. I would have marked good
You have several fun things for families to enjoy, but when my family has attended, they have seem overcrowded for the areas. This has led to us not attending anymore.
There are not any city planned community activities in our biggest park. Even if you had big events there is little parking and the river could be a bigger draw but the city doesn't seem to want to fund it's development. Riverside could be made more attractive and safe by adding lighting to the darkest roads and sidewalks.
They are fairly clean and well-maintained but do not compare to parks in other cities like Zilker Park in Austin. There isn't much infrastructure other than some playground equipment. I consider the ballpark a separate operation. The Gary T. Moses Municipal Pool is not managed with the proper security to make it an attractive place.
it is so beautiful and well kept most of the time --- it is so wonderful to see families enjoying the park
Riverside Park is a jewel.
Park is run down and dreary
Restroom need to have appropriate items.
victoria needs more activities for kids and families in general,more animal attractions at the zoo,better facilities for the

animals at the zoo,more contact information on the lions boulevard rental spaces at the park because when you leave messages on voice mails they don't return the calls in order to reserve a spot
The parks could be a little more presentable.
we do not have enough activities to keep our teens away from drugs
There are lots of great outdoor activities in Victoria compared to other city of this size.
Lots of room to develop more activities i.e. more picnic and play equipment in riverside.
Parks are clean, equipment is maintained.
I feel that our parks area's could be more attractive or appealing. If Victoria's parks were more appealing this might encourage people to come to Victoria from out of town to spend the day. Also this would get more people out doors and want to be more physically active.
Could use more variety of activities/facilities.
Turf maintenance is poor. Lots of sticker burrs, weeds, etc, and grass is not mowed frequently. General maintenance is below average. Posts missing or crooked, bathroom facilities in poor condition, and hardly ever clean and sanitary. There seems to be little attention paid to the upkeep of children's playscapes and equipment. There is a fairly large amount of trash on the nature trails in Riverside Park.
i wish there was a little security i don't feel completely comfortable walking in the park by myself.
There need to be much more lighting at Riverside Park so it could be used longer in the winter months. The bathrooms are very old, not well maintained and few in number.
not enough activities, facilities are not maintained, parks are over run with people drinking alcohol, no real trails to roller blade.
Good if you're a road cyclist or like running on a sidewalk, but if you're into mountain biking or trail running - not so good. Nature trail is not near long enough.
I like to see the city incorporate activities involving the river and a better boat ramp.
not maintained enough , like say a larger touristy city.
Poor appearance. Lack of innovative structures. I've been to parks in other city's that I would rate as awesome (for example the park in Corpus Christi on Shoreline) and then we come back to blah. The new softball fields are GREAT...but right next to them is a skatepark that needs MORE and has a lot of potential. we do LOVE the nature trail by the Hiller House.
Most parks include the same things.
The facilities are old and outdated but I am glad that we at least have the facilities
They all look old and not well taken care of. This lack of attention attracts the wrong crowds that keep good people out of your parks.
Restrooms could use a few more locations and a little work.
There are not as many amenities available for a city of this size as I am accustomed to coming from outside Victoria. The roads in Riverside park are in disrepair.
not as safe as it should be.
better things to do that are fun and safe for all groups of people
The activity's are always the same. Nothing new is brought in. We have a great park area but it is never used for anything other then market days. What happened to the dances that were held there years ago
the park is nice but the activities do not fit the boot theme.
Regarding Riverside I would like to see more emphasis on food being available. I have enjoyed all levels of baseball now being played and attend games fairly regularly. What happened to the idea of creating some type of park in the overflow area along Airline?
The park condition is very well maintained in some parts of the park. Other parts are grown over with vines and you cannot see the river. I have been to parks all over Texas that have gorgeous trees along their rivers but not so many vines that you cannot see and enjoy the river. The Community Center is nice but not above average.
There is room for improvement for example more landscaping, better walking/hiking trails and more physical fitness equipment.
Although the parks offer great opportunities for sports and families, there are not too many options for those who want to go oto the park to relax or enjoy the park atmosphere. I would love to have more places to read, study, or hang out with friends, but our options are more limited than if we played sports or had kids (playground areas).
Not enough family activities. Need more attractions.
Maintenance of areas
Activities are great but we need more facilities such as the covered areas with multiple tables and BBQ pits. this would allow for more family outings and as a result increase the use of our city parks. more restrooms near these areas is also a need.
Not good or bad, just average. Nothing that has a "wow" factor that would make the park system exellent. For example, a water attraction or outdoor concert series.
They sometimes seem dirty & bath rooms look and smell bad. due to othes
I would like to see more diverse sport teams for adults leagues.
Riverside seems run down. Public bathroom is outdated and nasty. Pond is ugly. The newer parks are cleaner and more attractive.
The park is maintained adequately. There are play areas for children as well as picnic tables and outdoor grills for families.
I DO NOT SEE MUCH OF A DIFFERENCE FROM OTHER PARKS TO SAY IT IS BETTER THAN AVERAGE.
There is nothing that is really outstanding in any of the parks that would encourage me to recommend them to anyone to

use for parties.
There is nothing that makes parks in Victoria stand out from parks in other city's. I would like to see another park on the north side of town.
Poor condition, not user friendly, not well maintained.
I feel like the bathroom areas need to be updated so they appear more clean. Also, There are multiple baskets missing from the disc golf course at Ethel Lee Park that have been missing for at least a year and never replaced.
The information needed to make choices to participate... I have not found
There's really not much to do out at the park other than allow children to play. All the work out equipment at the Riverside Park is out dated.
Nothing incredibly special about the parks.
nothing out of the norm. standard issue, just plug in a new year.
Would like to see an annual event like other communities.
Doesn't seem to be a lot going on
Every park contains swings and slides. Nothing stands out other than the zoo at Riverside. Maybe if there was a big playground area like the one in Goliad.
The bathrooms are horrible and there is no way I would go into them or let my child go into them when utilizing the walking trail. Not to mention just not very clean at all. I took my son to the duck pond to take pictures in the gazebo for prom and the sidewalk is falling into the pond it was nasty dirty and grafitti....
at riverside...there is no real place to have a picnic, and if you want to spend the day out there you need to get there really early to get a picnic table.
Nothing really stands out aobut them. There is limited seating unless you reserve a certain area, but even then, we end up having to rent tables and chairs for get togethers or parties. Also, not all city parks have bathrooms. That's a hassle.
There are a lot of parks in Victoria and you take care of them all well.
Just need a bit more park activity. It would be nice to have a train that goes completely around the park. It is fun for all who ride at any age. I think Zilcher park in Austin is the one I remember.
Riverside seems to be under utilized. Events such as the Chick-fa-la 5k, but there really aren't activities geared toward family and/or young adults looking to get outside for the day.
there is always an event scheduled for park property, both private & public
Not enough running events at the park. At this time you have 5 miles of trail cut at the park, yet no small trail runs yet.
Wish there were more events in the park like movies or music in the park.
few events in the parks; lack of facilities; sparsely landscaped (not enough gardens, fountains, and trees)
poor design
New parks and softball fields developed throughout the years
I would really say some where between average and excellent but that was not a choice but i think Riverside Park is a great place.
Riverside Park is under utilized Advertisement of P&R leagues/activities hardly reaches me. I listen to XM radio, am asleep before the 10pm news, and view the Advocate headlines online. Restrooms are gross
Numerous locations and activities for citizens to enjoy.
The Parks Department has made many infrastructure advancements in thepast 10 years
We have very few events for Christmas and Easter in the park...Children and Adults love these seasons...No train ride .
My children participate in baseball and softball. The new complex is nice but I dislike the location. We travel to other cities which have much nicer facilities and I always say to myself, I wish Victoria's ball facilities looked this nice.
there are varied activites appropriate for all ages
Notwell kept or up to date
Maintenance could be much better. I feel we have enough parks but they are poorly maintained interms of mowing and edging. Menny communities have more pristine parks.
need more advancements, and technologies,in general.Being on public, international , tourism , levels, to achieve for the Victoria crossroads metropolitan region .
Most of the parks need upkeep. Riverside Park needs to be cleaned up. I know that funds are tight but we need to clean it up so that it continues to be a drawing for people from out of town.
It just seems like we are doing what is expected but nothing out of the ordinary. If you want excellent you have to be a good leader and do things other cities aren't doing. People want to go where the action is. Does our Park dept. have any exciting action?
Nothing extraordinary done given the wonderful climate we have here "almost" year round
You are limited in what you can do because of the facilities that are available for use.
Still concerned about closing one of the walking trails
Our City Park is awesome, and all parks are very well taken care of. I think there couls be more activities available in Victoria.
Cleanliness is lacking in some areas which discourages my use of the parks with exception of Riverside Stadium; I am also not comfortable with the level of security visible in the park area(s)
I like the music groups that come. I like that the park is available for some special group activities. There is not enough continually attractions (like the zoo and the golf course). We need more of that - like we use to have the paddleboats, that train that went through the park . . . stuff like that. Not so specialized like frisbee golf.

Parks need to have more activity. A long time ago the Duck pond had the paddle boats. Bring them back. What about another play ground instead of just one and half? Better picnic areas with covering. The restrooms need an upgrade! Need clean bathrooms especially for children.
While the parks are OK, there are few real hike and bike trails and other activiites for outdoors.
While the newer facilities are nice, in general the parks in Victoria are not all they could be. The grounds are not kept trimmed and clean, the bathrooms at the sites are less than desirable, there should be updating completed throughout, and we should make better use of the golf course. Build a premier park around the course and commit to the upkeep needed to make it a showpiece. More can be done to upgrade and upkeep the existing facilities and expand on new ones. Quality soccer fields are needed.
The park has really gone downhill. It is not maintained very well. The grounds are horrible, the duck pond is filthy, the restrooms are disgusting....to name a few. There is not any decent playground equipment for children. There should be more play areas. Drugs and gang activities are prevalent.
I think we have an incredible asset with Riverside Park and the Guadupe River, but the river is not being utilized and the park is not well kept and not well utilized.
Couldn't say excellent because can't say anything really stands out. Riverside park is a beautiful park to enjoy when you can and it seems to be kept clean. The design of the youth sports complex has been sub par as far as parking and accessibility for people. Community Center is outdated and can not hold anything extremely large. There are better facilities at local smaller towns.
sparse and in very seedy parts of town.
would like more activities-ie movie in the park community art displays/sales, jazz or other music venues besides tejano and country western
The city park is not utilized to its fullest
quality of offerings, facilities-except for the little league fields, all other facilities are dated, often dirty, and run down. number of activities needs to increase and we need a wider variety.
Not many neighborhood parks. Riverside is great, but that is one park that is all the way across town.
Need to offer more family events
I don't seem to hear as much about. What is going on until I have missed the deadlines or its over.
not utilizing at this time
no particular problems, but nothing exciting
The parks and facilities are useful and well maintained, but are nothing special.
It takes a lot to be outstanding or excellent. Lots of money & lots of participation.
I think the parks - Riverside Park, in particular - could be such a huge asset and draw for the city. Instead they playground equipment sports vandalism, trash abounds, the restrooms are foul and they are generally unkempt and unmowed - not to mention covered up with people that I would prefer my children not hang around (on the weekends, mostly). Riverside Stadium is a high point and exception to these complaints - my family has very much enjoyed both UHV and Generals baseball.
City does not require parks dept. to provide a proper business plan and prove their plan before allowing projects to begin.
would like to see better and more parks. children's park is dirty. Rsstrooms are dirty at children's park. Dog poop is on the sidewalks and in the gravel and dirt the kids play on. Duck pond in dirty abd upkeep.
Not enough activities throughout the year in Riverside Park. No attactions.
More like "above average". Variety of uses from plain picnics to baseball to playgrounds to jogging trails. Clean in spite of careless users.
none really stand out
No thing is above average or perfect.This is slanted question.
Not really involved in much with the Parks and Recreation Dept. of the city.
yes
I love the nature trails
Overall maintenance of park areas, restroom facilities, benches, etc. needs improvement.
Some of the parks could use more maintenance and upkeep. Also it would be nice to see a police office patrol the area occasionally.
Low profile events
As my kid is getting older, it's harder to find things for him to play at the park. Water in duck pond is extremely nasty.
We have a beautiful City Park and your crews work hard to keep it looking good.
Condition of Riverside park compared to years ago
nothing to do in this town
I can't even remember any except the fireworks.
Riverside park seems dirty, especially the restrooms.
Needs better outdoor facilities, refreshments and food, something to do!
Our parks, especially Riverside Park, are very rundown. At Riverside, there are no decent public restroom facilities. While I understand that running a public restroom facility is no easy task, it seems to me that there is rarely ever any effort put into these facilities. Not having adequate, semi-clean restrooms is a definite negative. If I do visit the park, i will only stay for a short period of time due to this issue. Also, the staff at Riverside Golf Course could use a definite attitude adjustment.
Our facilities have come a long way, but the restrooms in the various parks are often atrocious. The exception is the Youth Sports Complex--it is consistently clean.

Riverside park seems to be run down and poorly maintained. The public restrooms at Riverside are deplorable. Even the newer parks seem to not be real well maintained. The Community Center is very dated. However, the new Little League fields are very nice.
Restrooms are often VERY dirty! Also, City vehicles and construction equipment travel TOO quickly near the Children's Park inside Riverside Park. On several occasions I have seen construction equipment travel between parked cars on the parking lots and travel at higher speeds than necessary.
The parks are run down and dirty bathrooms. Gazebo has graffiti.
need more park areas and they need to be better maintained
not up to date....graffitti....broken
Parks feel dirty
that is my opinion
Parks are not kept clean. Parks are not policed enough. Park infrastructure is not kept up. No signage in Greenbelt Park, causes residences to do all the policing because police are never around. Signage for pet rules are not posted. Would be nice to have trash cans and poop bags. Signage for motor, recreational vehicles needs to be posted. Pylons knocked out by tractors and mowers need to be replaced.
Riverside park has areas that seem to never get cleaned, the roads in the park need some work, need more activities & promotion of such.
not enough benches to sit down on around walking trails
lack of shade, lack of working water fountains, facilities in disrepair, trash barrels overflowing on Saturday.
I'm not sure i like the ways the money is spent on certain items and I surely don't like the idea of giving land to some private company to profit on.
There are playgrounds and parks. Nothing unique, not particularly clean, nothing that stands out as above average.
Not a whole lot of activities that I am aware of. Could be a lot more.
May its just a matter of communication. Doesn't seem to be frequent. Signage for parks is poor. parking for walking trail is poor. Community center not a friendly location for many events. Duck pond maintenance.
OLD equioment.....
General condition of Riverside Park, bathrooms, cleanliness. Several events I've attended in the special events area where there were broken glass bottles and other trash--these were family events.
Riverside Park needs serious maintenance. We need more children activity areas and new restroom facilities.
I feel there are too many parks. As a result, some of the maintenance that should be a top priority at the 'flagship' parks is suffering.
little access to all areas, dirt bathrooms, unkempt parks
The golf course is in great shape the rest of the park has been neglected. Roads, posts along roads, picnic areas, bathrooms all need repairs some worse than others. I believe the concrete walking trail needs to be at least as wide as the walking trail in town.
Riverside is in dire need of overall maintenance and care. A children's park is needed by the Zoo area as that end of the park is under used. The running / walking path also needs to be repaired, widened and expanded. All the restrooms in Riverside need to be cleaned on a regular basis.
Inadequate facilities to hold major events (i.e. concerts, major sporting events, etc). Inadequate support for events that are held (one person field crew at Riverside stadium)
need more pools and aquatic related activities
Basically kept up with and clean.
The publicity of the events and activities is not consistent. The city lacks parks in neighborhoods and does not have enough fields for football, baseball and softball practices or simple leisure games for residents. Amphitheaters could be used for outdoor concerts. Practice fields at Ethel Lee Tracy Park have been littered with broken bottles and drug user items such as syringes.
There is the same things, nothing really exciting to do. They used to have the Macaroni Fest at Riverside, and now that's gone. Find more outdoor fun things to have. Outdoor bands in the summer are great entertainment.
I have lived in North Texas for the past ten years and in every town, big or small, there is a Dog Park. Victoria is in dire need of a Dog Park. Most towns have a Dog Park. I was extremely disappointed with all the parks in Victoria that there was not one. Dogs need a park of their own where they can run free, and interact with other dogs.
Victoria Parks and activities seem to be set on a slow pace for expansion and development. Maintenance without growth eventually leads to the death of a program and our community places and this way of thinking has resulted in the underutilization of our riverfront resource(s), bland parks like Ethel Lee Tracy, and a parks department devoid of its own unique activities and events. Overall, "Average" indicates that we have a stale and sterile collection of parks instead of a vibrant and virile program that drives people out and around our green areas.
I think it would be nice if Victoria had a dog park.
I always have good experiences. Park is clean. I dont go to all of them.
There's nothing really exciting going on
Variety of activities. Well organized. Safe for the whole family.
I think that there could be a lot more done in the town
Insofar as maintenance and park care is concerned, I would provide a rating of "Excellent". After having been to parks in cities such as Austin and San Antonio however, Victoria parks are lacking in available activities (i.e., mountain biking trail, exercise equipment, running trail longer than the Nature trail, etc.)
I think avg is good.
You have a choice to do what you would like to do that week.

Riverside needs improvements.
Everything has been the same, For tourist it is a very nice place because they havent seen the same thing for the past 10+ years
Not enough activities scheduled
I think the parks are in need of maintenance - disgusting bathrooms in Riverside - and underutilized. I would love to see more festivals and events happen. Maintain the volleyball courts with nets and create some real basketball courts for kids to use.
The parks are very attractive and very well maintained
There isn't much for the elderly
The restrooms are nasty
Never have anything interesting going on. I mean you do, but just not enough variety.
other cities have nicer and more parks and bike lanes and trails
You provide many quality services and exciting events for many citizens.
i would like to see more activities for kids and more fun runs.
The parks, I think, are actually better than average, as far as maintenance. No opinion of the activities as I've not taken part.
no comment really, more advanced notice of events might help and better access to Riverside Park
Not interested in most activities but when I've gone to Market Days it hasn't been as good as it use to be.
all the parks are nice,And they are kept clean .
Needs more activies for adults and children to keep them out of trouble.
The newer parks are nice but the older parks need some upkeep.
The caliber of people that frequent them.
Because there is nothing above average about any of our parks. They are nice, but average.
Restroom facilities need lots of work, not much play equipment for small children. Riverside needs more security personnel
Riverside is nice, but there seems to be no vision to expand and connect the city's parks. An interconnecting hike-and-bike trail, for example, is essential to improve park usage. City also should do more to take advantage of its waterways for leisure activities.
lots of different activities for all interests & age levels
large area not being used
Honestly, excellent and average are too far apart. I think some parks are excellent and some are poor and some are average, etc. etc.
Opinion is high, but don't really go anymore.
I see more organizations using the park, runners club, paddlers, ALS walk etc
There is nothing out of the ordinary about any of the parks.
There are not events for kids.
Need more activities in the parks
To be rated excellent you would have to be close to perfect. It's not about what you already have or are already doing, it's about are we utilizing what we have in the best way and to it's fullest potential and to the parks dept.'s fullest potential.
I do not see anything out of the ordinary in our local parks.
The parks department keeps the parks in very nice conditions and they do a good job at keeping the park bathrooms cleaned.
facilities/bathrooms/scary
I don't see them publicized
The parks restrooms need some improvement.
Haven't been there yet---just heard about them on the web--specifically the Pump Track.
Need more biking and hiking trails.
The city has options for the community to choose from with outdoor activities, same as most cities. I have also seen and experienced cities that go well beyond just the basics for offering the city more things to do.
Unfortunately at this time I don't use any of the parks. I think you do a great job maintaining the parks but they are just not a place I go and do things at.
There is always room for improvement.
Riverside Park is under-developed. Neighborhood parks are needed in several populated areas in north and northeast Victoria.
Absolutely no activities, festivals or gatherings at the parks and most of each park is forgotten about and unkempt. We have what could be two very beautiful attractions to Victoria, Riverside Park and Saxet Lake but the city never holds festivals or anything at those places that would actually attract out-of-towners, Cuero has a tiny park and still manages to do something wonderful every year for Christmas, guess where we go at Christmas time? The Cuero park to see the lights, why can't Victoria step up and make our parks the places they should be and could be? Maybe if we held some gatherings or had some great things going on other than the same old Market Days and baseball games people can actually bring their boots and enjoy something. At the Riverside park it would be quite nice if some of the brush along the banks were cleaned up so people could actually see the river ... and clean out that disgusting duck pond that's always filled with trash and algae.
I think that we need more involvement in the community. We need something new and exciting.
Clean the banks by sending the inmates down there. No one gets to enjoy the water area, nor all the driving area.

Maintenance of parks.
Do not appreciate the way Riverside stadium is managed.
Need more maintenance roads leading into the park
the type of people who go to our parks...the parks need to be "policed" better.
The parks here seem similar to those in other areas
I've come from a community where green space/parks are a priority in terms of space and care (Portland, OR). The park space we have here is fine, but there is not enough. Would love to have more hike and bike trails and open, natural areas without ball fields or skate parks.
All the parks are just like every other park in Texas. We need something new and exciting!
need more parking space availability throughout the park!!!
I find there are a lot if things for people with little kids but not so much with teenagers.
Not nearly enough hiking, bike, walking trails.
would like to see movies under the stars again.
Well, to be honest, some are excellent, some average, and somewell maybe they need to be reconsidered. You asked, so here it is. I have always felt that we had more parks than we could fully take care of. Now is the time to look hard at what needs to be changes.
Bike trails inadequate
Maintance is not a good as it should be
In my nearly 20 years here, we've come a long way; I think we were coming from below average, though. I am happy to see what we've done and what we are doing, and I hope we are headed for above average or excellent
there is nothing very special available.
I am currently a young adult, but even as a teenager the city parks and other facilities didn't offer many activities. Majority of parks and facilities are designed for baseball. Other than the Skate Park the city didnt offer any other activity other than baseball fields and 1 overused basketball court.
i have been to other cities of same size and they have smoother roads.
park is in need of some maint. & upgrading
the existing bike trails are not usable in all areas of the park. maybe need to add some off road mountain bike trails
Most activities are on a yearly basis. I think monthly activities would be more fun for kids and adults who have to miss out on certain days.
Great city park, good support of city council, good baord
For space that's available not many activities..ie hiking trails, biking... Also upkeep average, trash is a problem
Aged facilities. Lack of sufficient facilities that attract events. Many smaller surrounding communities are years ahead of us. Lack of sports fields.
I think we need more hike trails, bike trails, basketball courts and more picnic tables/sites.
For a town of our size, we have some great parks - especially riverside.
I always enjoy the parks.
I don't go tp the parks often. When I do, I always go to Riverside Park, which is typically fairly well kempt. However, I often see people trash the park with there picnic and beer trash. Is there any way to put some teeth in an ordinance [that is probably already in place] regarding littering (and someone in place to catch people being trashy)?
dated/worn infrastructure, lack of hike & bike trails, lack of lighting.
I know there is a lot going on but there is not a lot that interests me.
Need more bike and walking trails. Need more parking in Riverside.
Overall safety. Lack of proper guardrails.
There is not a sidewalk going all the way through riverside park. Furthermore, there are no marked bicycle lanes and very few water faucets.
When my children were smaller, the playground equipment was already old - needed to be upgraded...
Park rules need to be enforced.
No fields to host sporting events, such as soccer tournaments, which would attract a large number of visitors.
There are a number of fine parks in the city and they are well maintained.
Would like more family oriented activities scheduled. Also need more advanced notifications.
We need more hike and bike trails connecting the city to the parks.
Riverside park is beautiful. There could be more access to the river, but that's not my biggest issue. There's not enough bathrooms. The ones that are there are nasty. NASTY. Dark and unwelcoming. DID I SAY NASTY??? The lovely areas that you can rent for a small bar b que or party HAVE NO BATHROOMS nearby. We have a gorgeous park, and it's huge, but it's not made to be the shining star it could be. Have more family events there, would love to have family fairs or something where kids could have run, do the jump houses, raise money for whatever.
The parks are widely dispersed across the city and within a convenient distance of most neighborhoods.
People, including the City, seem to just try and do one activity here or there.. Where as, getting together with the whole community. Might benefit and allow all us to go and enjoy these activities.

Question #3

3. Has anything ever prevented you from fully enjoying a visit to a Victoria park, Community Center, or other park facility?		
Answer Options	Response Percent	Response Count
Yes	46.9%	186
No	53.1%	211
Please let us know what happened.		180
	<i>answered question</i>	397
	<i>skipped question</i>	177
Please let us know what happened.		
safty and cleanliness issues		
Parking for the trail is pitiful. It is a beautiful trail but when you have to park in the rutted, hidden lot on Miori and slog thru mud to get to the trail, it becomes a not so nice experience.		
restrooms cleanliness of park		
Too much overcrowding on weekends at Riverside Park.		
The bath room was disgusting		
1) The arena is not wheel chair friendly and is very Hot... 2) Being wheel bound is very hard to roll to the table due poles preventing you to drive up./.. some picnic tables that accesible by wheel chair either more closer to parking or make driving up to area more easier... thanks		
See above.		
lack of facilities		
The dirty, unsanitary conditions		
Parking. Plenty of litter and "Boom-Boom" cars to keep the parks trashy as always.		
No, but Victoria is in dire need for a much larger and to keep up with demand and anticipated population growth.		
Ya charge too much...most of the events r overpriced...where's all that money go too? Oh the gazebo where noone goes...		
fire ants and poison ivy in Riverside Park, the bathrooms are creepy there too.		
The trash along the river, but I pick it up as I'm walking.		
Two weekends ago my cousin had a baby shower in Riverside park. The bathrooms that we had to walk to were so filthy we chose to hold it rather than go and they had no toilet paper, towels or soap. And (other) people were still using them. I guess the toilet paper that was all over the floor was actually supposed to be used. <yuck>		
The biggest and only regional park in Victoria is Riverside, which is partially underwater or damaged from flooding numerous times in the year.		
When running at Riverside, it does not make a complete circle, you are forced onto the road or to turn around. More outdoor gym pieces would be great too. Also the playground at Riverside only has 1-2 swings, my nieces were ready to leave because they wanted to swing but couldn't with so many kids.		
Parking, Event access and adaaquate seating venues i.e. Community center for rodeo and other events.		
Very loud music from car stereos with explicit lyrics. Not very family friendly		
Bees or wasps in playground equipment that we hoped our grandkids could use on a visit to Riverside park. Flooded nature trail. Restrooms in poor condition.		
The Community Center need a facelift, move the rodeo area away, possible on loop 463. Use the area for conference space. Add a tower of some sort to distinguish the center. With the property you have , there are a lot of possibilities. Contact the City of Palm Desert, Ca. for some ideas. Put Victoria on the map for some other reason than being bland.		
Restrooms are horried! Especially at the ball fields		
Users on weekend almost 100% Hispanic. No sane person wants to be around a bunch of drinking rude people.		
@ riverside park, not enough picnic tables		
Not aware of many events with exception of baseball games or soccer practice		
I've had numerous episodes during which I inadvertently walked into an area where I was unwelcome or in danger. There are too many criminals in the park.		
Lack of adequate lighting and safety resources have made a simple jog become anything but. The parks need to be made to accomadate everyone--and that includes college students, young adults moving here for work right out of school, etc.		
facilities need updating; additional amenities		
Loud rap music, gang related activity		
flooding, smelly restrooms		
The type of people that hang out at the park are not the best.		
Flooding		
There are no doors on the handball courts. Many of the basketball rims are damaged.		
Dissatisfaction with upkeep.		
too loud of drive by music that just keeps coming around and around. Cruising.		
The rose garden in Riverside Park looked unkempt the first time I went - maybe because it was the end of a long, hot summer.		
it looked like someone was dealing in the parking lot		

The cinco de mayo event. The people there tried to keep us from playing disc golf. Also, the people with the really loud music are very annoying.
The activities that go on in the bathroom by the zoo are disgusting and I do not want my child experiencing any of this. Also the bathrooms need to be kept cleaner.
See question #2
We just help an awareness ride for cyclist asking for some respect on our roadways. Those of us using the Parks roads are in danger because of how fast people drive through our park and how ignorant they are at sharing the road with bikes & runners. They swerve at us, drive in the lanes of on coming traffic, throw objects & obscene gesturs our way. It is becoming my own personal goal to make sure they learn to respect us & learn we aren't going anywhere. Also, there are a number of people out there with dogs that don't have leashes. This is intimidating to me because I have been bit/attacked by dogs before so I am always concerned when they are out running freely.
bathroom cleanliness
Trails muddy after a rain.
bathrooms duck pond is always looking yucky and smells
Riverside Park has too many perverts. This park is a diamond in the rough and not being utilized to its potential.
Loud drunk folks
Crowds.
Dirty playground equipment and bees.
"Cruisers" in the park practically stalking when trying to work out. A park security patrol would be welcomed and much needed
An employee at the Gary T. Moses Pool was threatened by aggressive teens who continued to wait outside until his shift was over. He reported many incidents of fights. This is likely why you can't hire lifeguards right now. The duct pond is not well-maintained to be clean and attractive. The Horsemen's Club area is a complete eyesore.
Over crowding, traffic, rowdiness.
undesirable types of people
The concrete trail is beautiful, but many people can't walk on concrete for long distances. Wish it would have been asphalt.
I visit our zoo quite often. It is awesome!
lack of parking.
Sometimes other people @ the parks do not respect the others and play thier music to loud.
Saftey. As a single mother I never really felt safe to take my child to the park.
Overt drug use, loud music from vehicles, sticker burrs in the grass, trash on nature trails.
In general the facilities are old (except the new baseball fields which cost millions od \$\$\$ and benefit a few individuals.
Over run with people drinking alcohol
Loud music from vehicles and people using illegal narcotics. I believe a police presence would help with this these matters. Not a patrol officer driving through but an officer or security staff assigned to the park area.
Riverside golf course is an extremely nice course however, the staff is extremely rude. For tourist visiting the city, the staff will leave a very bad impression of Victoria. Have a look at the ratings and comments about Riverside golf course on Yahoo and see what other people are saying. As I understand it the course is owned by the city, but ran by its members. This practice needs to be reevaluated. The take out for the paddling trail is far too steep to drag a kayak out by yourself. It needs to have a much more gradual slope.
Unruly people.infrequent police presence.
We desperately need a dog park in this city. My dog is like my child and it'd be nice to take her to an off-leash designated area. Austin offers a lot of these which tend to attract more people.
Poor bathroom facilities in the park & dirty bathrooms at the adult softball park
Gang members hanging out there.
Grass not cut and mesquitos
I feel unfomfortable and unsafe in Riverside park after business hours. There are cars parked in the park after hours and late into the evening in solitary. There are people that come into the park who are obviously not concerned about following rules.
The cost of renting the Community center is to Expensive
I would like to see more police patrol in the parks.
I do not feel 100 % safe with my children in some of the parks.
Lack of Police in the parks. People parking on the grass. Loud music. Dirty restrooms.
Insufficient picnic areas for individual families. Poorly maintained areas
Lack of seating/tables for family outings and restroom accesibility.
Some people tend to get a little out of control. Not enough security.
Drugs gang and homosexual activity.
Nothing that is the parks department's fault just other visitors with a lack of respect for the park and other family's.
To many thugs, criminal activity, feelings of unsafeness.
Only bad weather
red river st. leading into riverside park
gang, drug and homosexual activity
Dirty
Again, seating and bathrooms. There either isn't a bathroom or something in the bathrooms is broken whether it be no

running water or toilet paper..ect.
Poor security. Men driving around looking for women to harass. I feel like I can't jog or walk in Riverside alone after 6 PM without at least a pocket knife. A little security would be nice.
children's park pavillion bathrooms were dirty
filthy duck pond
restrooms to far from activity area
Dope smoking in areas of Riverside Park while trying to take young children on a bicycle ride. I did not feel safe in some of the back areas of the park.
not being able to park under the trees in the park like we used to in the 60's
not very appealing
See above comment. Other than that not challenges enjoying facilities.
Sometimes it looks kind of "gang-ish". I recogcognize that people have different tastes in clothes and music, but perhaps if it wasn't so loud.
Sometimes their is a negative feel in the park. Perhaps the wrong type of people hanging out there.
drugs and gang activity. Poor maintenance....et al
Broken playground equipment, dirty (feces) playground equipment, overgrown nature trail, aggressive geese at duck pond
Yes, location
Feeling of unsafe environment by those visiting the park.
Loud boom box sounds from cars & truck.
Trash around trash cans. Pond scum in duck pond.
People behaving inappropriately. Gross bathrooms.
too crowded
Nothing you can help..hot weather, mosquitoes. Sometimes we stay away from kids play area because big kids are dominating the toddlers but not often. Maybe need an area near that for older bigger kids.(Riverside)
Restrooms at the Children's place are filthy. I take part in an annual event and we were appalled by the conditions of the restrooms the first year. Each subsequent year, we organizers have called the park office prior to the event and are promised the bathrooms will be clean and supplied. But that has yet to happen. (And we are there first thing in the a.m. so it's not like they were cleaned the night before and someone trashed them before we got there.) We now bring our own toilet paper, paper towels, soap,and sanitizer, which is annoying, but not as annoying as being let down by the city office.
Poor restroom facilities
creepy men cruising for sex, drug dealing in bathrooms at Children's park
too much traffic/people
Loud music from some of the people who frequent the park.
Many of the swings have been removed for various parks. Mountain bike park not taken care of, needs to be a little more spread out so that the humps aren't so close.
Seems like every Saturday there is some "special event". During Cinco De Mayo a whole section of the park was blocked off. The whole ofthe "Fox Bend area was unavailable.
It has to do with the walking trail. I would like to have a handicapped parking area on the so. side off Airline, to prevent crossing Airline before beginning on the trail.
Enjoying hot dogs/hamburgers with family - three other families surrounded us with loud music, smoking and foul language. One of the manner-less kids even took food from our table! When I said something - was threatened - we left.
nothing there; all you have is the stockshow and then you have the beer garden and a bunch of drunks that are there and no one can enjoy it.
Yes, you have failed to maintain Riverside Park, especially down by the river where there is trash everywhere. Also, while kayaking, we have seen people using drugs.
To many kids in the area. Loud music playing not so nice words. I don't really care to have my children listen to those nasty 4-letter words. We don't use them and I don't think we should have to listen to that music and the language some people speak out there.
restroom in riverside park is terrible. several nice areas in the park are unused.
I used to be a once or twice a month patron of Riverside Golf Course. I have not played there in nearly a year due to the lack of courtesy and customer service skills of the staff. They always appear to be having a bad day and are generally very rude. I have actually talked myself out of playing golf at Riverside because I did not feel like being subjected to such behavior.
See above
Again, as stated above.
Dirty bathrooms with no stall doors.
gangs
Riverside park - families drinking and smoking while celebrating birthdays
Failed to arrive with poop bags for my dog and so I left.
lack of parking,parks are very trashy
Noxious odor from trash cans prevented picnic.
Nasty restrooms has been our biggest complaint. Overflowing trash and bees. Also, limited age use in an area close enough to supervise. We used to visit parks several times a week, now we hardly go. Bad language, unsupervised kids, grafitti, nasty bathrooms, and bee stings have made the playgrounds a less than favorite experience for my kids.

The trails are still nice, but bathroom facilities are important if we're going to spend several hours outside....
i enjoy playing disc golf..when theres a walk or other events ..3-4 holes are unplayable and the next 2-3 days the fields are trashy w/ bottle and other trash
See #2--general condition of park.
Gangster attitude of other park patrons.
This is not a City problem, but I often find unsavory folks at some of the parks in Victoria. I have never felt unsafe, but was not completely comfortable, either.
Lack of law enforcement at Riverside. Gang activity is rampant, alcohol is consumed to the point that fights occur, loud music (with all the nice 4 letter words) from vehicles goes unchecked and unmonitored.
Dogs roaming around without a leash are another minor concern, it's rare but it happens
The community center is totally inadequate. You need an arena as well that could hold basketball, hockey, concerts, etc with 4-5 thousand seating.
Riverside was too crowded.
As our children played nearby in the middle of the day a couple was having sex in their car. Even the kids noticed. Also males soliciting sex makes it difficult to just enjoy the scenery or read a book. (riverside park)
safety concerns in Riverside Park is the reason me and my family don't use it. Afraid of gang activity.
Perception of criminal activity in and around Riverside park by members of my peers prevents us from playing volleyball in the evenings.
There are certain people I don't get along with and problems will escalate from there
Lack of trails, equipment
The heat during the summer sometimes.
Some children once threatened to hit my seven year old son at Ethel Lee Tracy Park
Market Days - Cut my foot on branches. Lots of them laying around that day. Talked with other people and they were having the same problem just trying to walk around out there.
No response given
I have been out there with my children and have seen people speeding through the park and drinking and driving, which concerns me with so many kids and people being around.
parking
crowd control
Not feeling safe at times. Anything can happen if your alone.
The rocks in the playground area. Its hard to keep up with two little ones. To make sure my one year old is not eating little rocks or my three yr is not thowing them. No rocks please!
Again, the caliber of people that are there.
The restrooms are generally a mess. The softball complex is a mess. Contracting that out was a mistake. Concessions are too expensive.
Couldn't find an empty picnic table; many times "neighbors" playing loud music drove us away
can't find the entrance to a park listed on our map, down on southeast corner
Children grew up.I am checking what we used to use.
shady characters at Childrens playgroud at Riverside in the evening
People doing drugs hanging around so I don't go to Riverside unless with large group or with large function there
The restroom facilities in Riverside Park are so bad, that we had to leave to find useable facilities.
snakes at the duck pond, unclean pavillions, graffitti on gazebo, lack of restrooms at lowe field
Safety issues and restroom cleanliness
I usually ride in the park on my bicycle-or walk. I have been approached several times by people who are perhaps involved in "shady activity" who ask me directions,etc...I never see police cars in Riverside patrolling--perhaps they need to be there
Security concerns at Riverside Park. Would like to see more police patrol on weekends.
I reserved a playground for my sons third birthday. The river was on the rise so the park was closed. So we had to move the party. Not a big deal, mother nature is the boss. We got a full refund.
Cant drive everywhere anymore nor get to river easily.
we went one afternoon to just sit and enjoy some take out, and a family comes up to our picnic table telling us to move, because they had it reserved...
At times there are people in the parks who appear to possibly be conducting drug transactions.
Dogs off leash in Riverside park often mean my leashed dog and I have to leave. In fact we rarely walk down there anymore.
When my son turned two we resurved a playground in riverside. That weekend the park was closed. So we had to regroup and replan.
Sometimes the crowd that comes to the park scares us. I know this isn't your fault but it does get pretty scary at times. My kids don't even want to go for a walk in the park because of some of the people that drive by. =(
Sometimes people smoking pot at the playground are a little scary
There are areas of our biggest park that no one can get into. And even though our views of the river have improved over the years,.....we still need to knock the brush from the trees to allow more. Remember, having a river running through your town is an asset not a deterrent. Also, it is important to keep working towards developing the RV park.....not making it a harsh trailer park, but plant more trees, and add more pads. It is the prettiest view in Victoria.
colored duck pond water

Concern about theft has led me to be a little more on guard than I'd like to have to be.
Very difficult to get out of the kayak ramp in low water times. Rst rooms were very dirty.
Riverside park's restrooms as well as Saxet Lake's don't have doors and never have toilet paper and are never cleaned
Rain
Trash, loud music, and shady looking characters
Trashed out picnic areas, unsavory people (my wife had a guy come into the restroom once when she was in there), men cruising the park looking to pick someone up.
very dirty bathrooms and potential criminal activity
Lack of water faucets
needles and drug paraphernalia found around the playgrounds
Yes this past weekend, Mothers Day, we tried to enjoy the park with a family outing. However, persons were parking on the grass areas, playing there vehicle radios at a high volume and smoking illegal drugs.
In the 4 hours we were there, we never observed any police patrol vehicles, COV employees, or park maint vehicles.
I am appalled at how people trash the beautiful parks in our city by discarding trash everywhere (even feet from a garbage can), graffiti, vandalism, etc. It affects the experience of those of us who are respectful of our parks and public places.
Riding to Riverside is dangerous from North Victoria.
Limited bathrooms at Riverside. Dark, creepy bathrooms at Riverside.

Question #4

4. Please check which Victoria park facilities you and/or your family use?

Answer Options	Response Count	Response Percent
Duck Pond	244	60.4%
Playgrounds	209	51.7%
Restrooms	183	45.3%
Trails - All Weather(concrete, paved)(running, walking, biking)	181	44.8%
Gazebos (Duck Pond, Rose Garden, DeLeon Plaza)	171	42.3%
Nature Areas	170	42.1%
Trails - Natural (running, walking, biking)	166	41.1%
Picnic sites (table and grill)	165	40.8%
Riverside Stadium	162	40.1%
Rose Garden	157	38.9%
Fishing Areas (Duck Pond, Tracy Park)	98	24.3%
Baseball/Softball Fields (Youth Sports Complex)	90	22.3%
Special Events Area	81	20.0%
Pavilions	80	19.8%
Paddling Trail (Kayak, Canoe)	73	18.1%
Boat Ramp	59	14.6%
Disc Golf Course	53	13.1%
Other Pavilions (Lions Club, Optimist)	51	12.6%
Adult Softball	48	11.9%
Pump Track (Mountain Bike Area)	43	10.6%
Swimming Pool (Gary Moses)	38	9.4%
Basketball Courts	34	8.4%
Lowe/Rippamonti Ballfields	31	7.7%
Skatepark	30	7.4%
Tennis Courts	29	7.2%
Practice Baseball/Softball Fields	25	6.2%
RV Park	15	3.7%
None	13	3.2%
<i>answered question</i>		404
<i>skipped question</i>		170

Question #5

5. Which city parks/areas do you and/or your family visit?

Answer Options	Once a Week	Once a Month	Several Times a Year	Never	Response Count
Boulevard Park	1	1	6	206	214
Brownson Park	0	0	14	201	215
Children's Park	13	26	104	107	250
DeLeon Plaza	16	39	116	81	252

Ethel Lee Tracy Park	14	48	133	86	281
Greenbelt Park	10	3	16	191	220
Hopkins Park	1	3	16	198	218
Martin Luther King Jr. Park	1	4	7	204	216
Meadowlane Park	0	0	3	209	212
Memorial Park	3	2	20	192	217
Pine Street Community Park	0	0	9	205	214
Queen City Park	0	0	7	207	214
Riverside Park	115	89	149	24	377
Ted B. Reed Park	9	33	92	121	255
Will Rogers Park	1	0	7	200	208
Youth Sports Complex	33	20	71	127	251
<i>answered question</i>					398
<i>skipped question</i>					176

Question #6

6. Let us know how important our existing facilities are to you and/or your family?						
Answer Options	Very Important	Important	Not Important At All	N/A	Rating Average	Response Count
Trails - natural	165	105	46	27	2.21	315
Playgrounds	162	108	42	26	2.09	314
Trails - paved (concrete, asphalt)	162	107	43	26	2.21	309
Nature areas	145	132	40	25	2.18	312
Picnic sites (table and grill)	131	139	43	21	2.31	303
Gazebos (Duck Pond, Rose Garden)	103	153	48	32	2.16	316
Youth Sports Complex	99	121	56	40	2.27	303
Rose Garden	94	145	51	36	1.88	324
Pavilions	92	145	55	25	1.82	336
Fishing areas (Duck Pond, Tracy Park)	91	140	57	36	2.36	303
Paddling trail (Kayak, Canoe)	86	104	75	55	1.67	342
Swimming pool	69	80	107	53	1.87	317
Amphitheater	52	118	75	69	1.72	334
Ball Fields - Stadium/Lowe/Rippamonti	52	97	95	68	1.62	338
Boat ramp	50	113	90	63	1.96	320
Adult softball fields	48	98	101	68	1.85	326
Tennis courts	48	90	106	58	2.24	302
Skatepark	46	93	110	57	2.15	309
Ball Fields - practice	44	99	93	73	2.26	306
Sand volleyball courts	42	107	101	52	2.24	302
Basketball court	37	87	110	69	1.62	338
Disc Golf Course	37	102	101	63	1.62	343
Horseshoe throwing areas	30	92	116	65	1.84	316
<i>answered question</i>						392
<i>skipped question</i>						182

Question #7

7. Did you participate in any of the following events in 2010? Check all events, and/or activities that you attended or participated in the last year.		
Answer Options	Response Count	Response Percent
Market Days	221	60.2%
Zoo Events	193	52.6%
Parades	170	46.3%
Festivals	166	45.2%
Athletic Events (runs, walks)	118	32.2%
Christmas in the Park	113	30.8%
July 4th Celebration	107	29.2%
Riverside Golf Course (Play or Tournament)	96	26.2%
Youth Sports Leagues	90	24.5%
Jazz Fest	86	23.4%
Adult Sports Leagues	55	15.0%
Educational Programs	52	14.2%
Rodeo events (Horseman's Club)	39	10.6%
Other (please specify)	38	10.4%
Swimming Pool Program	21	5.7%
Instructional Programs	17	4.6%
<i>answered question</i>		367
<i>skipped question</i>		207

Question #8

8. Which of the following types of facilities would you and/or your family like to have in your parks? Please check your top FOUR. Only one selection in each column.					
Ranking based on #1 Pick					
Answer Options	My #1 Pick	My #2 Pick	My #3 Pick	My #4 Pick	Response Count
Water Park	54	36	31	36	157
Amphitheater	39	20	19	11	89
Dog Parks	32	15	19	14	80
Restrooms	31	30	25	28	114
Trails - All Weather - Paved (concrete or asphalt)	27	20	29	28	104
Playgrounds	24	18	26	16	84
Mountain Biking	21	18	10	9	58
Nature Areas	20	30	19	22	91
Trails - Natural	18	29	36	26	109
Water Playground (Splash Pads)	16	33	31	20	100
Exercise Stations along Trails	13	15	16	10	54
Baseball Fields	11	10	3	4	28
Decorative Gardens	10	13	8	15	46
Paddling Trail (Kayak, Canoe)	10	12	14	10	46
Historic/Archaeological Areas	7	12	18	17	54
Disc Golf Course	7	1	2	3	13
Fishing Areas (Duck Pond, Tracy Park)	6	10	11	18	45
Equestrian areas (Horses)	6	4	4	6	20
Practice Ball Fields Softball Fields	5	5	1	1	12
Recreation Center	4	11	9	15	39
Soccer Fields - Youth	4	5	8	4	21
Boat Ramp	4	3	5	4	16
Swimming Pool	3	2	4	9	18
Pavilions	2	8	11	10	31
Football Fields - Youth	2	5	8	3	18
Soccer Fields - Adult	2	3	1	3	9
Tennis Courts	1	4	4	9	18
Skatepark	1	3	1	7	12
Basketball Court	0	4	1	1	6
Other (please specify)					28
<i>answered question</i>					389
<i>skipped question</i>					185

Question #9

9. Which of the following programs or events, if offered by Victoria Parks and Recreation Department, would you most likely attend?		
Answer Options	Response Count	Response Percent
Outdoor concerts, plays and films	269	68.4%
Festivals	242	61.6%
Nature programs	150	38.2%
Street dances	136	34.6%
Exercise classes	111	28.2%
Arts and craft classes	99	25.2%
Youth sports	98	24.9%
Noon concerts	97	24.7%
Adult sports	96	24.4%
Self-defense classes	83	21.1%
Hunting awareness programs	81	20.6%
Summer and/or after school programs	72	18.3%
Aquatic classes	68	17.3%
Golf lessons	57	14.5%
Teen programming	42	10.7%
Senior programs	41	10.4%
Swim instruction	36	9.2%
Tennis instruction	32	8.1%
Other (please specify)	18	
<i>answered question</i>		393
<i>skipped question</i>		181

Question #10

10. Do you think the City of Victoria should acquire and purchase more land for future parks?		
Answer Options	Response Count	Response Percent
Yes	255	64.6%
No	140	35.4%
<i>answered question</i>		395
<i>skipped question</i>		179

Question #11

11. Do you think the City of Victoria should acquire and purchase more land for future Neighborhood Parks? Remember the service area is ½ mile. (10 acres or less)		
Answer Options	Response Count	Response Percent
Yes	143	58.4%
No	102	41.6%
<i>answered question</i>		245
<i>skipped question</i>		329

Question #12

12. Do you think the City of Victoria should acquire and purchase more land for future Community Parks? Remember the service area is 2 miles. (10 acres to 150 acres)		
Answer Options	Response Count	Response Percent
Yes	183	73.2%
No	67	26.8%
<i>answered question</i>		250
<i>skipped question</i>		324

Question #13

13. Do you think the City of Victoria should acquire and purchase more land for future Regional Parks? Remember the service area is the entire City. (greater than 150 acres)		
Answer Options	Response Count	Response Percent
Yes	168	67.7%
No	80	32.3%
<i>answered question</i>	248	248
<i>skipped question</i>	326	326

Question #14

14. As you indicated that the City of Victoria should acquire and purchase more property for future parks, would you still support this initiative with the understanding that additional taxpayer support would be necessary to fund this?		
Answer Options	Response Count	Response Percent
Yes	194	76.7%
No	11	4.3%
Not Sure	48	19.0%
<i>answered question</i>	253	253
<i>skipped question</i>	321	321

Question #15

15. Gender		
Answer Options	Response Percent	Response Count
Male	53.2%	207
Female	46.8%	182
<i>answered question</i>	389	389
<i>skipped question</i>	185	185

Question #16

16. Please tell us how old are you?		
Answer Options	Response Count	Response Percent
Under 17	2	0.5%
18 - 24	12	3.1%
25 - 34	68	17.4%
35 - 44	101	25.9%
45 - 54	127	32.6%
55 - 64	59	15.1%
65+	21	5.4%
<i>answered question</i>	390	390
<i>skipped question</i>	184	184

Question #17

17. How long have you lived in the City of Victoria?		
Answer Options	Response Count	Response Percent
3 years or less	25	6.5%
4 - 6 years	40	10.4%
7 - 10 years	30	7.8%
11 - 19 years	56	14.6%
20+ years	232	60.6%
<i>answered question</i>	383	383
<i>skipped question</i>	191	191

Question #18

18. How many people live in your household?			
Answer Options		Response Percent	Response Count
1		9.5%	37
2		31.2%	121
3		19.8%	77
4		20.1%	78
5		14.2%	55
6+		5.2%	20
answered question		388	388
skipped question		186	186

Question #19

19. Please look at the map above and select the area in which you live:		
Answer Options	Response Percent	Response Count
Southwest 1 (Blue)	12.9%	48
Southeast 2 (Red)	9.9%	37
North 3 (Yellow)	38.4%	143
East 4 (Green)	21.5%	80
Outside city limits of Victoria	17.2%	64
If outside city limits, please let us know where:		74
answered question		372
skipped question		202

Question #20

20. Please provide below any other thoughts or comments on the City of Victoria's park and recreation facilities, events or activities.	
Answer Options	Response Count
	174
answered question	174
skipped question	400
Response Text	
Nature	
I think you all are doing a fabulous job!	
canoe instructions, single basketball court.. one goal.. for one family..	
I think it would be a great benefit to the city to have small splash parks at our parks.	
add a special needs addition to the children's park.. something very unique, I don't have recommendation at this time...	
Park Rangers should be added to take care of Riverside Park to prevent car burglaries, loud music, narcotics use, homosexual activity in the restrooms, and the such.	
I think that parks can be updated with some modifications- if we could have shading on the playgrounds then we would be able to use them frequently and not just certain parks with trees and time of day.	
I feel like upkeep needs to be focused on instead of new parks	
Just need to be cleaner for the most part.	
Plan ahead for future for all ethnic groups and include motorcycle groups.They are a great source of support and money.	
I don't think we need more parks, but we need the ones we have to be maintained and things added to them. Riverside Park is a gold mine that just needs to be utilized properly. As far as the other parks...I do not even consider them because Riverside is so beautiful and what I envision a park should look like with all the trees and nature. The other little parks are just blah in comparison. So I hope that you can add more things to Riverside and by all means fix the roads.	
not easy to use youth complex for tournaments fund raisers	
It would be nice if the walking trails did not parallel the roads. It is just an unpleasant walking and biking experience. Also, little ones have a higher probability of running into the street. It would be nice if the bathrooms at Riverside were cleaner. We really like the grills and tables. The playgrounds are nice too. esp. at the Children's park.	
Please just keep two things in mind for the master plan: 1) variety of park activities, 2) socio-economic equity	
need a swim\water recreation area for kids and famil;ies.	

<p>#1) The adult ball fields in the park do not have adequate bathroom facilities during adult league game seasons. Spectators and visiting teams from out of town have to run or drive almost a quarter of a mile to restroom facilities at the corner of Memorial and John F. Lee Drives. Questions and concerns about using the Stadium facilities have always been an issue with the city parks dept. and certain baseball organizations every year and never seem to get resolved.</p> <p>#2) Restroom facilities and gate access at the youth sports complex has been another concern in the outer clusters of fields. Due to parking some spectators are forced to park their cars in the skatepark parking lot and walk over the bridge which isn't bad but then they are forced to walk all the way to the front of the facility only to back track to the fields for which they just past and a perfectly usable access gate to the cluster. The access gate has been opened for most of the game days allowing access but on VISD game days the city's policy is to keep them closed as to not lose gate ticket sales for the HS softball games. Many youth girls softball spectators are grandparents and parents with several small children that are forced to make this long walk due to this practice which has resulted in many of this year's spectators just simply NOT coming to see their kids play. (A probable solution to this would be a portable temporary fence with a ticket desk between Roy High Field and the Championship Softball field. Little league could give colored tickets on certain days to present them at the gate for game access to Roy High, BetterLife, and Colortyme Fields, leaving all other gate access open for entry)</p> <p>#3) Having walked all that distance on the days that the gates have been closed, now all these multi children parents, children and senior citizens are forced to walk back towards the concession stand area to the ONLY restroom facilities in the park when there is ample room at the cluster for another smaller restroom facility. The same for the baseball side cluster on this problem.</p> <p>#4) The concession stand is also a problem, having first hand knowledge by word of mouth MORE people would utilize the concession if they were more available. Times of 35 minute waits in travel and line waiting makes the utilization of the concession stand a non-option seeing how most games only last 90 minutes in Little League and only 55 to 75 minutes in VGSA softball. Once again the clusters should be utilized for the possibility of outer concessions even if its just roll away cart stands.</p> <p>#5) Parking at the main park (Riverside) has always been an issue since most of the parking areas were reduced making it a more drive through park and not a park and enjoy type like in other cities of our size.</p> <p>#6) Revenue is an issue when we are not getting the most dollar return for our facilities. Tournaments, Rodeos Concerts have always been money revenue makers in other cities and as a staff member of other tournament committee's such as in Tyler, and Waco, TX there is money to be had for the whole community i.e. Hotels, Gas Stations (fuel sales), Grocery stores (food & drink sales), Malls and Movie houses tourist and other misc. sales. Concerts with ample parking and seating venues are a must to make them a success for future attractions. The charging of non-profit organizations to use these facilities seriously has hurt their financial status making the program non-enjoyable and at times NON-appealing to the parents who are shelling out their hard earned money to cover these costs.</p> <p>#7) As cities grow so should the facilities such as our community center which is clearly too small to house our major events of the year, example the Livestock show which always in conjunction with a rodeo which cannot happen due to lack of venue and facility space to hold it. I know that ALL I have commented on has one common denominator and that is the ALL MIGHTY \$ but it also happens to be the truth as well as my personal feelings. Thank you for the opportunity to share them with you and would be glad to offer any further input or assistance with any other City Park's topics.</p>
Need a park in the green area of the city #4 no park there just the shields school.
We love the new trail on the east side of town. Hope some day it can be extended to other parts of town. As the city population ages, has anyone ever considered a volunteer corp of "experienced" folks like some National Parks and State Parks have to assist the city in upkeep, programs, etc.
I'd say take a look at some other progressive parks. Nice parks, with a lot of trees are nice.
During Market Days, many times the music is too loud for us to hear our customers. Many vendors have told me the same. Music nice, just lower the volume. (Not a concert)
Victoria has great participation in cycling, running, swimming but not enough safe places to train. There is an active lifestyle of many adults that is not being addressed by this city. Victoria would be a healthier and more attractive city if they offered better resources to cater to this lifestyle
I'd like to see a few concerts in the evenings. DeLeon Plaza is the only place I'd take an out-of-town relative if I were trying to "show-off" Victoria.
Need more pools
Why can Cuero, Yorktown, Gonzales, and many others have very successful festivals and we can't?
bring something fun make carnivals more fun with more rides bring better bands to events maybe City of Victoria's park and recreation should build water/theme park to give the community and other cities to have fun in Victoria I think its a good reward for the city and more income (hint)
I would prefer that tax money be spent to improve the facilities in Riverside Park instead of buying additional property at this time. The riverfront property is terribly underutilized.
EVEN THOUGH I DON'T USE THE PARKS A LOT I THINK THEY ARE IMPORTANT AND I KNOW PEOPLE WHO DO USE THEM
consider sharing profits or allowing the sale of concession to organizations
you trying you doing a good job. but money is tight. need to christmas parade back downtown.
PLEASE build a Dog Park!!
Would like more nature activities/facilities, less focus on sports
sports complexes both youth and adult need a little more attention and care. Field maintenance needs to be stepped up.
NEED MORE EVENTS FOR KIDS. BASKET BALL LEAGUE, SOCCER LEAGUE, MORE EVENTS FOR KIDS
We live in a great city, its just that people have to learn to appreciate what we have and help to better them. Being facilities, events or activities we as the people of Victoria have to learn to do our part and that is " Get out and support

any and all events that take place, we are the ones that can make the difference"
I am very pleased with the Parks and Recreating Department. I am thankful we have such an assertive group making Riverside Park a true family gem.
Like to see a boat ramp at river side park near the restaurent for padlers
need more bike friendly streets
Could the city provide a space to rent to keep bicycles at Riverside Park 100 Mc Cright. I love to ride in the park but its hard to transport my bicycle
Riverside Park is an incredible asset and needs to be maintained better.
Clean restrooms are a must. Especially downtown.
avoid huge costly mistakes i.e. hike & bike trail examine maintenance cost prior to developement
Please put more money into Riverside Park! It is beautiful. I also think it is important to have a water park or a park with water features where kids can have fun.
more biking and walking trails that flow throughout city
There is not a good park within the city limits on the north part of town
Love the parks here...they are the best in any area I have lived. Please don't let then fall into disrepair.
I believe if you used trustees to help clean up the park this would help with time management and getting things done. Also believe if we did a Christmas in the park (decorating the park) and charging people to come in would help the economy of Victoria. Possibly think of bringing the train back to the park. Doing more events kid related to get kids out in the park and exercising. Contributing to the Zoo to make it bigger and have them bring in more animals and do more with what they have.
Good park & recreation facilities are a good draw for those of us who live outside city limits. We come into town specifically to enjoy the experience of Riverside and other parks, and while in town we spend money on items to help us enjoy these facilities.
Improve Riverside and Ethel Lee Tracy before building more parks. Small parks over run with gang activity
Enlarge Riverside to the North.
Please take a look at Herman Park in Houston or Breckenridge Park in San Antonio. Very nice parks with lots to do.
I would like to see more walking trails (or even sidewalks) that connect TO each park... I'd like to be able to leave my home and make my way to the park via these trails.
kayak play park
Riverside has so much potential. Its a shame that Red River Street from Vine to the park is in such terrible shape. That would be my first concern for improving Riverside Park.
Extend the paddling trail north to Hwy 77 and Nursery.
Partner with area activites such as Master Gardners and Master Naturalist, paddling club, Musum, out door youth programs, biking clubs to increase the value and frequence of park visits
Parks are wonderful entertainment for the grandchildren, but must be maintained. Ethel Lee Tracy is a nice park, but the groundcover for the playground is falling apart and is a danger for tripping.
I would like to see another regional park with updated venues and playgrounds with security personnel provided and adequate lighting so the walking paths can be utilized safely at night. All of this is provided Riverside park is not going to be revamped with added activity programs, parking and safety concerns addressed
I believe Victoria is poised for growth and that we're in a dynamic time. Proactive approaches to all our infrastructure are needed.
keep up the good work
We need a waterpark. It would attract people from nearby communities so revenue would come to victoria and it would be great for our families in Victoria.
I believe that Riverside Stadium is the most important facility in Victoria and needs some renevation to keep it up to date with other great baseball facilities around the area.
The new little league complex is a great start to getting this city into the 21 century. Don't stop now!!!
I feel that there should be more neighborhood parks. But really we should promote and spruce up the already existing parks.
I would like to see another well maintained regional park wherein the entire city could benefit from programs, concerts, possibly an incorporated waterpark, and more well kept fitness equipment and nature areas.
The bathrooms at Riverside Park are not kept up.
improved work out equipment for the park.
No one likes rocks in their shoes :) We have been to parks that use recycled rubber tires instead of the pebble stuff under playgrounds. It is much better.
they must be maintained for our ciotizens and visitors!!!
Instead of buying more land for additional parks, spend the money on making what you already have better and more user friendly.
Stop spending tax dollars on nice facilities on the south end of town. No one in there right mind wants to go down there to use any of it!
Bring back fireworks to community center
Victoria should offer more concerts, movies, etc, on a regular basis and I really would like to see a play area similar to San Marcos's playscape (wooden structure suitable for all ages).
I would just like to see more spaces to play soccer that would be very nice, as well as a few more restrooms and cleaner too.

we need things to do that are safe for children and teens the teens are not being active and are board.
The City of Round Rock has a wonderful park. www.roundrocktexas.gov/parksandrec They have a "people and parks circle" program that we need in our city. They also have their master plan listed on their web site.
The City has ample park space already available. For example, River Side park has a lot of land that could be used for additional attractions. Also, Ethel Lee Tracy Park has an amphitheater that is seldom or under used to the best of my knowledge.
I would really like to see some park areas with easy parking, activities, etc for our aging population. As well as our teenagers. There is not much available for the teenagers. They need more things to keep them off the streets and away for drugs and alcohol.
sometimes the prices for the events and summer programs are prohibitive to some families
I understand the need for parks in "at risk" neighborhoods but parks in other neighborhoods that are more family friendly would be nice and a better way to spend the parks departments funds
where is the mountain biking pump track?
Would love to see a water park or theme park come to Victoria, entertainment and revenue in one. Victoria needs to grow and offer more to our youth in the way of entertainment and when old enough jobs.
I would recommend concentrating on renovating or improving existing property rather than acquiring new land. We have sections of Riverside that aren't even developed anymore and have been sitting vacant for YEARS! Take care of what we have before taking on a new project.
More running trails paved and unpaved are needed to keep runners safe
Build a water park and connect the trails around the city.
more restrooms should be added to youth complex closer to playing fields
I think Riverside Park is one of Victoria's greatest assets. I think improving and expanding it would be great for the community. I would like to see more trails for waling and running but without concrete surface. Concrete is a poor surface for walking and running.
If funds permit, I'd like to see the jogging/walking trail extended through east of Airline along the water retention area up to John Stockbauer and the placement of a pad for parking at the intersections to avoid problems when there is heavy rain that prevents cars from entering the lots.
I think having security frequent the City's areas more would be a plus....people are afraid.....
Golf Course is a total mess. Outdated and it looks like no money is ever spent on improving the way it looks
PROVIDED GOOD MASTER PLAN AT HAND ON ACHIEVEMENTS SAFETY ,SECURITY, AND PLANNING GOALS ,OF FUTURISTIC EVENTS COMING VICTORIAS' METROPOLITAN CULTURES STREAMS OF FUN ,AND ENJOYMMENT.
We have a good park system. They just need upkeep and expansion.
I just think you ought to have events that keep people engaged in enjoying the parks. People flow into energy. While I think the Parks Dept is doing a good job keeping the parks in good shape there is not a whole lot of energy for people to be excited about. Doesn't have to be all of the time but there needs to be some things that excite people. After all a community is about increasing the quality of life in our community.
We need a venue that will seat 4000 people or more for concerts,graduations, etc.
I can't read your map
I'm in favor of a master plan that gives thought to connecting with hike/bike trails all the parks.
Our "parks" especially Riverside Park is really an embarassment to our community. We pay city employees to maintain the park....it's not being done very well.
While I don't think we need to purchase more recreational land, I do very much think we need to improve and utilize our current parks.
I would LOVE for the City of Victoria to install splash pads - my children have enjoyed this type of recreation when we are in other cities, large and small. I truly believe that Riverside Park could be a real gem for the city - it just looks rundown and is taken over on the weekends by people who don't care about keeping it clean or maintaining a family atmosphere. And the bathrooms ... the bathrooms at the public beach in Port O'Connor are about 1,000,000 times nicer ... and that's saying something!
Though I am one person I have extended family who will probably not do survey and my answers reflect all our uses. I am usually the one who reads the upcoming events and gets everyone there so don't ignore seniors opinions. I was unaware of somany smaller parks and will now seek them out. I wonder if anyone uses them? I live by Memorial and no one ever uses it. Maybe we need some community action to rally people to do something to revitalize small parks. With some landscaping, picnic tables, and maybe some easy tomaintain play equipment , Memorial would be used more. So though I believe in buying land for future parks I think better use of current parks and community involvement is really important. Now. About that dog park !!!
You need to get out more info on where the parks are. Maps need to be easier to read. Encourage people to use the parks we have. Lots more of your time and money needs to be spent on Riverside Park area. Need more easy access to river. Open roads that go down to major bends in river. More parking at boat ramp across from Rose Garden. Dangerous for major events. Need more trails and camping spots in Riverside. Build Dance facility in park to go along with "Boots" program. Ask yourself where is there a desert place to go dance in the city? Also you should have advertised this survey more and given people more time to respond. Riverside Park could be like Brackenridge Park and you need to open your minds to the opportunities. The restaurant will spark interest in this area and you could lease more land to business people for other attractions.
Would like the Parks and Rec. Dept to build and maintain a washer pitching area (washer pits) for tournaments that

could draw out of town pitchers for recreation and competition.
I would really like to see an Artisan only market days event twice a year in De Leon plaza. The Riverside one fails to showcase artists' work and it gets lost in the sea of plastic Chinese toys, Avon, junk food and junk. Artists and crafters really have no venue in town and I have given up on Market Days. There is not anything for us.
Maintain and improve what currently exists before adding new choices.
It would be nice to have some type of water park. We drive out of town many weekends in the summer to enjoy other water parks, it would be nice to spend that money locally.
The area's of Fox Bend and Grover's Bend have been blocked off to driving traffic for some time. This has allowed walkers, bicyclist, and runners to use these areas without concern for traffic. Many people bring their dogs down to walk in this area, and many enjoy birdwatching. I believe it would be useful to keep these areas free of vehicular traffic. It would also be nice if you were to post when these areas will be closed to the general public for special events.
Would like more activities for Seniors
Please clean up Riverside, especially Grover and Fox Bends.
Better zoo, paddle boats, things for children to do... miniature golf, bumper cars, bounce toys
riverside is a very nice park but it still has too many unused areas and cleaning up the terrible restroom could be a start. that restroom is so bad I'd put in the unused catagory as well.
I would really like to see more cleaner, safer areas for families to use. The current parks are in decent shape, but they could definitely benefit from a little bit more TLC.
We are so pleased that Victoria finally has a Youth Sports Complex that we can be proud of. The Skatepark is a gem too. The Hike and Bike Trail is a step in the right direction also...anxious to see it expanded. I think we're missing out on potential revenue by not having a state of the art rodeo arena. Edna and Gonzales have frequent events in theirs that draw large numbers of out of town visitors. The playgrounds are generally well maintained, but the restrooms need some work. Keep up the good work!
Clean up and maintain what is existing.
bring something fun to victoria that people would come to like (water park,theme park) hint fun
A lot of the "bones" for a good park system are in place, just need to be "meated out". If the bare minimum is done for & to the park system then support for it will shrivel up from neglect. Enjoy coming into town for nature trails, canoeing, picnics, etc but only as long as the parks are neat, clean, & well maintained. Riverside will ALWAYS be my favorite. Please take good care of her. Thanks.
the walking trails need more benches so people can rest and relax
Victoria has beautiful land for parks. Before more purchases are made, it would be nice to get the existing ones in better condition. After that, I would support purchasing additional lands for families to enjoy outdoor nature and sports activities together... Cost is a limiting factor for so many families. We can't even afford to participate in the YMCA and other "low cost" activities in this town. We choose to be a single income family, so we are very concerned about the parks. Having family clean up days is always an option. In the town where we used to live, once a year, there was a park clean up day. Families came out and picked up trash, did simple repairs etc.. all over the town. Afterwards, businesses donated food and entertainment. It was a great day of serving followed by a fun afternoon of entertainment... a win-win for the town and it's residents....
Because of the heat in South Texas, I think there should be more water related activities and parks. Also, more events like evening concerts and movies so that there are things to do for the youth in this area.
Bring back the street dances!
Flower garden (bulbs) in Memorial Park.
I would like to see greater emphasis on events. I think there is greater participation in events than day to day, and they can be profitable.
I think Victoria has taken on more than it can handle. I would like to see Victoria concentrate more on Riverside Park in maintaining and ensuring it is a nice "quiet" place to visit. I would like to see a fight once every 20 years instead of once a weekend.
CoV needs to continue it's support of Riverside GC, one of the best public courses in South Texas.
You really need a multi purpose facility like an arena in this city.
Scuba lessons would be nice
More police presence
Parks/playgrounds should be a required part of subdivision development as part of an approved development plan submitted by a developer. Having to drive to a park/playground defeats the purpose of exercise. Would like to see some dog parks incorporated into existing community and regional parks. Also an expanded trail system that would link all parks over time should be a long term plan.
I think a dog park would be a great addition to the city of Victoria.
Motivating businesses to partner and use the parks for events like an easter egg hunt, enlarging Market Days, and sponsored features will create buy-in and can tap into those businesses marketing budgets as well as philanthropy. The community at large would be happy to ride on the Academy Bike Trail or play in the Wells Fargo Water Park; knowing that their tax dollars were wisely spent soliciting sponsorships and growing Victoria's resources.
Dog Park. Dog Park. Dog Park. Invest in a place where people can be social with their dogs. Dog Parks are awesome places. It is just what Victoria needs!
I think that the charge for the Community Center is too much
Grovers and Foxes Bend should be improved and used for biking, walking trails, as well as special events such as disc golf.
i appreciate your department for releasing this survey.

Improve bathroom facilities
n/a
I haven't lived here long, but believe, that the existing parks are sufficient.
Water park or river walk would be very nice. Why should we have to go out of town to enjoy a water park?
Either I missed it or you didn't mention the paved trail that runs from John Stockbauer to Airline. That is a great trail!
Victoria has Many parks where you can go enjoy yourself,They are clean and Beautiful.
Summer time you need to have free activies for the poor children. Set up a pot for donations for those that care, and can contribute to the cause, to help children in need.
We have small children so some of the sports and water activites you offer do not apply to us at the moment.Once they get older I am sure we will be using these also at the parks. I also did not suggest you purchase more land for parks. I would rather you sell some of the parks that arent in use and use that money to improve or expand on existing parks. Victoria is known for its ghost town appearance with the empty buildings and even our parks that no one ever uses (except for illegal activity durring night hours).
Parks are essential to our quality of life. The city should reconsider its use of hotel/motel tax on advertising campaign and put that toward putting heads in beds for park attractions like an interconnecting hike-and-bike trail and a water park in Riverside.
LOVE Riverside Park, just need a better (& safer) paddling take out spot
More hike and bike trails through out the city. How about adding the old gravel pits north of Riverside to that park? And while you are at it keep cleaning out around the trees on the river bank!! It still is our loveliest asset . But, ONLY Aquire more parks IF the city is willing to provide the proper maintenance. Oh, one more thought...Evergreen cemetary still needs working on.
Walk and bike trails are very good.
Rails to Trails is an awesome program if there is a future for it in Victoria
I would like to see our Parks Dept. dress up the areas already under their control. I think it's important to take care of the properties that are there and make them the best they can be. It's what the visitors see when they come to town. The lack of seasonal color and even plantings at some of the area parks is not showing our best to the people who visit. We need to take pride in our city and show it by dressing up the public areas. I also would like to see the city develop bike lanes on all the major streets so that we could become more bike friendly and promote a healthier lifestyle. All in all, I think you are doing a good job, I would just like to see us expand above and beyond and more toward excellent. Also, why not have a summer concert series on Thurs. evenings at DeLeon Plaza? What a great way to show off the new downtown area. You could work in conjunction with the Main Street director.
I would like to see mountain bike/bike trails added to the riverside park, but true mountainbike trails (i.e.-not something you can drive a tractor down.
I think instead of using more money to buy land for parks, we should look at the land of parks we have now and just update and improve on what we already have.
We need to take care of the parks facilities we have and better develop them first before acquiring new parks. I'd like to see the lone tree trail expanded and maybe more parks along the trail.
Would like to see the summer camp program brought back. Taking this program out left many school age children without a positive place to go for the summer at an affordable price. I know MANY parents who would like to see this program brought back.
Please consider the amount of money this town spent on branding and trying to get people from out of town to come here, so give them something to do or a great festival to attend! For a town the size of Victoria we really should be having some sort of yearly festival to celebrate what we are known for or something and we don't. We just have tiny little gatherings here and there that sometimes just don't make sense. The nature trails are wonderful and I really would like to see some parking along the concrete one that meanders through the Miori Lane area, only people that live around there seem to be able to use it as I have yet to see where I could park that isn't on someone's property or on the street. We really enjoy the trails at the Riverside and use them weekly, and sometimes we make our own just to go down to the riverbank area and get more of a nature feel, that's what the park is for in my opinion, why have it along the banks of the beautiful river and you can't even get to it much less see it in 90% of the area. Saxet Lakes we drive to often and just look at it in shame, it's so peaceful and pretty out there and such a shame the city has just forgotten about it and no ones goes out there, it's well kept I will say but half of the park area is blocked off when there is no reason it should be, we have picnics all the time out there. Just a shame that the city doesn't think of activities or things they could hold out there to get people to realize that it's really nice out there and not at all what they think ... maybe consider moving Market Days out there and just having a really large Market Days/Flea/Farmers Market going on over a weekend or something out there. That would be nice, people could enjoy the water view, the quiet, picnic with their family and shop the Market Days ... that would only work though if the back area was reopened to allow enough space for everyone to come out and enjoy the day. Give people a reason to go there don't just shrug your shoulders and think "bad things have happened there, no one goes there ... oh well" We have NOTHING to do except enjoy the nature, so give them something or a reason to get out there an enjoy it. That really should have been this towns brand ... Look around it's a beautiful place to live with so much nature wise to do all around you in all directions and we don't or can't take advantage of it because there's no access, or nothing to draw the people out to come do it.
We need more places for kiddos to play in the water. I think that we would all benefit from them.
Riverside stadium needs to be rented fairly to the high schools and no special priveleges should be given to public schools vs. private school through fees or choices in time scheduling. Entry road to Riverside Park on Red River is in dire need of repairs. This is an embarrasment to our City for teams and guests traveling in and having to drive that road. That road leads to your special events area, the stadium (used by UHV, Generals and all High Schools) and needs

addressing soon. Your car can be ruined driving it. Filling the pot holes does not make for valid repairs.
we have a beautiful area in riverside park but I think in the long range plans we need to enhance riverside and develop more neighborhood parks and rec areas. Most people do not have enough money to put play stations and swings in their backyards. Put more playground at school sites. Riverside needs more restroom sites.
half the parks listed on this questionnaire, I wasn't even aware of...who ever the marketing director is for parks and rec needs to do a better job...
N/A
We need more trees & less buildboards in victoria
A couple of friends and I made several calls in an attempt to obtain a booth for market days. When I finally called one last time, was told by the person who answered the phone that a Scentsy consultant has already been booked for the rest of the year. I had been told that you could attempt to get it month per month. So when did rules get changed, or are rules just made as you go to whomever you speak to? After that call, went to next market days and no Scentsy booth was set up (so one of us could have set it up, had we known), the next month booth was set up and the consultant is from San Antonio. If City and Chamber want us to shop in Victoria instead of shopping out of town...should the City practice what it preaches and also get Victoria consultants instead of out of town ones. I know that we have at least a dozen Scentsy consultants in Victoria and/or Victoria county.
i love the riverside park and think there is a lot of opportunity there for our city if it is patrolled a bit more. we love the pump track, the zoo, the trails and would love a mountain bike trail.
We need Great horse event Center. A much improved live stock shoe ares. We have a large horse comunity and there is money to be made with a state of the art horse event center.
I think we are making good progress; we need to keep on going.
Don't reinvent the wheel. What is working in other communities? No time to brainstorm right now but here is couple off top of my head: Idea- would like to see combination sports fields for soccer, football, volleyball (3 sports currently not catered to by Parks dept) with walking trails and exercise stations. Could be utilized by adults and youth. Idea- Give master gardeners(or some group that might be interested) an area where they can plant a fruit and berry orchard for community use and education.
some parks don't have restrooms. and if they do they are dirty
There is nothing to do in this City for the kids. We need more places for them to go and be occupied.
I think offerings have improved including the facilities
We are very fortunate to have Riverside park! It can be so much more!! Thank you for the opportunity to provide community input.
In general, parks does a great job. Would like existing parks to be cleaner. Would like MTB trails, and would like parks connected through bike paths and trails.
Need more things for younger adults. Need a water park, but bigger than Sheridan.
I would very much appreciate Hike & Bike trails and/or cycling lanes on main roads that connected parks and made it easier for cyclists to commute via bicycle.
Love that Victoria values having good parks for the children.
Very impressed with the initiatives being taken on the improvement of the parks and recreational faclitites in Victoria.
The trails need to be well marked with loops returning to the same parking spot, ideally with water and a restroom facility.
The new walking trail is wonderful. Looking at your list of city parks, I've never even heard of a few of them. Where is the Green Belt Park?? How about a campaign to tell people about the different city parks. And frankly some of these are in a questionable part of town, so I wouldn't go there alone.
Some of the parks look a bit "run down" and could use maintenance of existing equipment or new equipment.